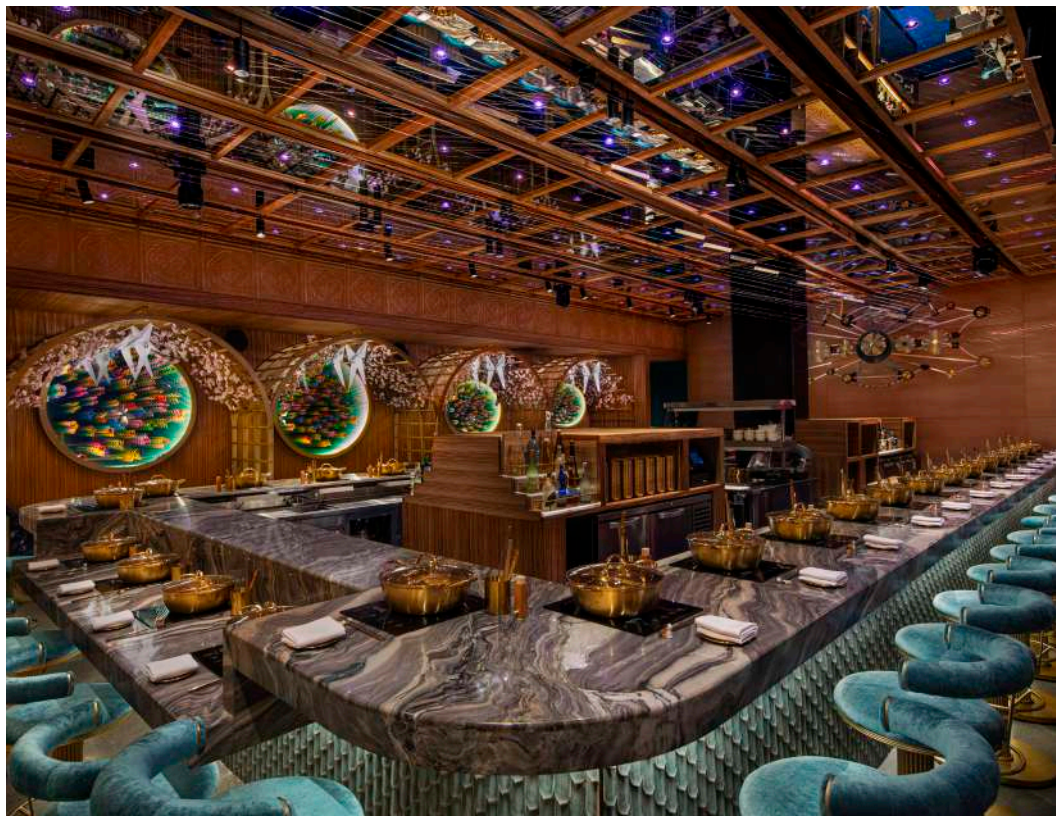
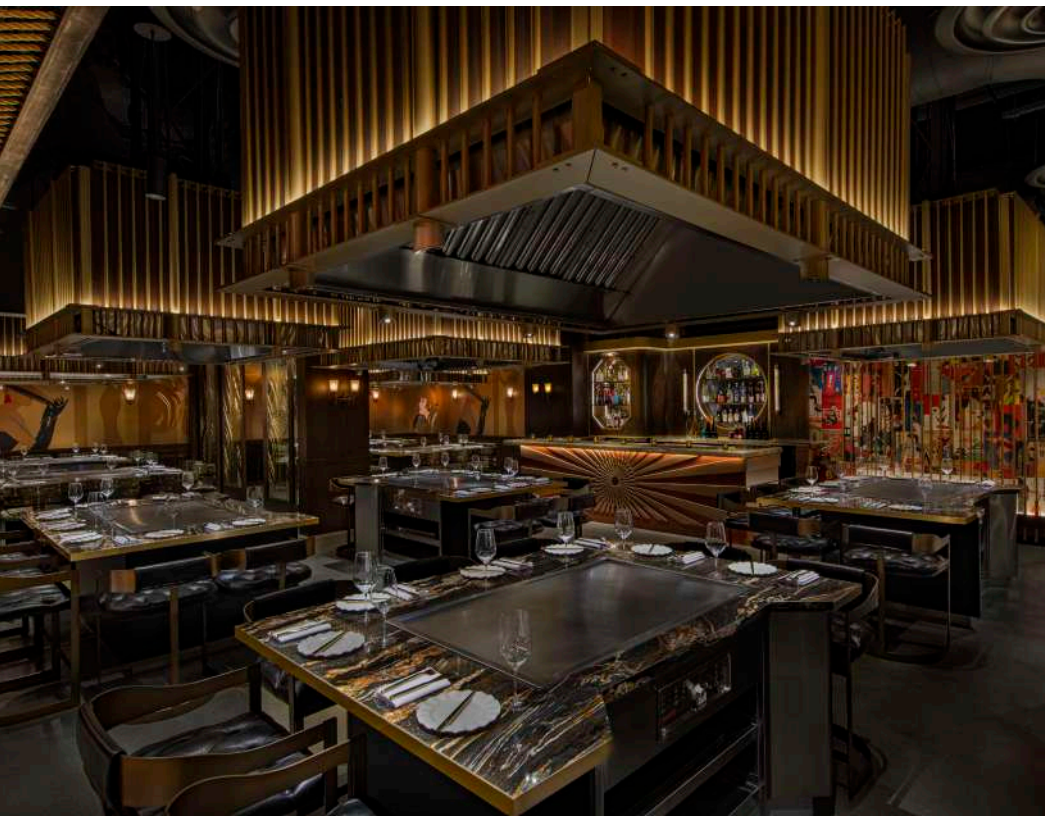


LEVEL 8



LEVEL 8

Immersive hospitality visionaries Mark and Jonnie Houston, in collaboration with Mitchell Hochberg of Lightstone, have launched their first multilayered concept, Level 8. Revolutionizing Los Angeles' dining and social landscape, this first-of-its-kind dining, drinking, and entertainment experience features eight distinct and mesmerizing destinations, occupying the entirety of the eighth floor of the recently launched Moxy & AC Hotel Downtown LA, located directly across the street from Crypto.com Arena and the Los Angeles Convention Center.

Sprawled across 30,000 square feet of indoor and outdoor space, with room for over 1500* guests, this expansive maze of concepts brings together a riot of seemingly disparate global influences held together by their connection to the history of Downtown LA and by an artful combination of authentic cuisine, performance-driven nightlife, and interactive design.





HOUSTON HOSPITALITY

Born and raised in Los Angeles, the Houston brothers grew up in Koreatown around the bar, culinary and nightlife scene. And over the years, they have created a niche market of luxe, experiential hot spots. Their desire to bridge the gap between a dive bar and a nightclub in LA led them to create their own first-of-their-kind speakeasies and clubs. Beginning with the launch of Piano Bar in 2007, a flurry of additional concepts followed, each more inventive than the last. Over the years, spanning from Los Angeles to Las Vegas, the additions to the Houston Hospitality portfolio include: La Descarga, No Vacancy, Dirty Laundry, Good Times at Davey Wayne's, Break Room 86, Kiss Kiss Bang Bang, and On the Record at Park MGM Las Vegas.

Known for their transportive concepts and spaces, they have attracted top talent and celebrities across the city including Lady Gaga, Olivia Rodrigo, Billie Eilish, Drake, the Weeknd, Diplo, Dave Grohl of the Foo Fighters, Bruno Mars, and many more.

LEVEL 8

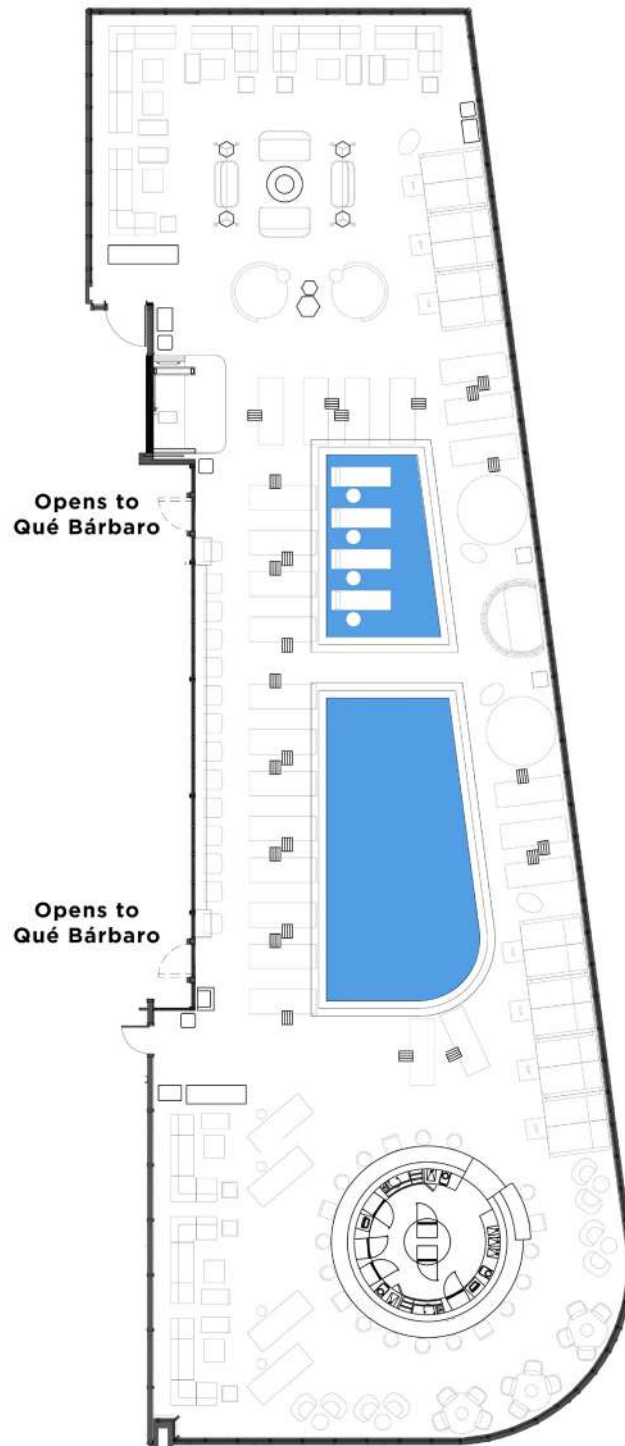
Located on the 8th floor overlooking Downtown Los Angeles, this incomparable event venue is directly across the street to L.A. Convention Center & Crypto.com Arena. Featuring versatile spaces for dinner and dancing, formal dinners, buffets, and receptions, corporate meetings, product launches, press junkets, weddings and more.

- Custom curated chef-driven menus
- Pre-function meeting spaces
- Dance floors
- Built in sound with the latest tech capabilities
- Inputs for TV, hardwired internet, audio, video & DJ
- Performance stages
- Modern facilities and equipment
- Full lighting capabilities
- State of the art audio/visual equipment
- Flexible layout options
- Excellent sound and acoustics
- AI fresco roof decks
- Complimentary high-speed WIFI
- Valet Parking

	GOLDEN HOUR		LUCKY MIZU		MOTHER OF PEARL
	MR. WANDERLUST		QUÉ BÁRBARO		SINNERS Y SANTOS
	MAISON KASAI		THE BROWN SHEEP		B.O.H.

*CAPACITIES VARY BASED UPON FURNITURE CONFIGURATIONS AND HOURLY EVENT FLOW EXPECTATIONS.





GOLDEN HOUR

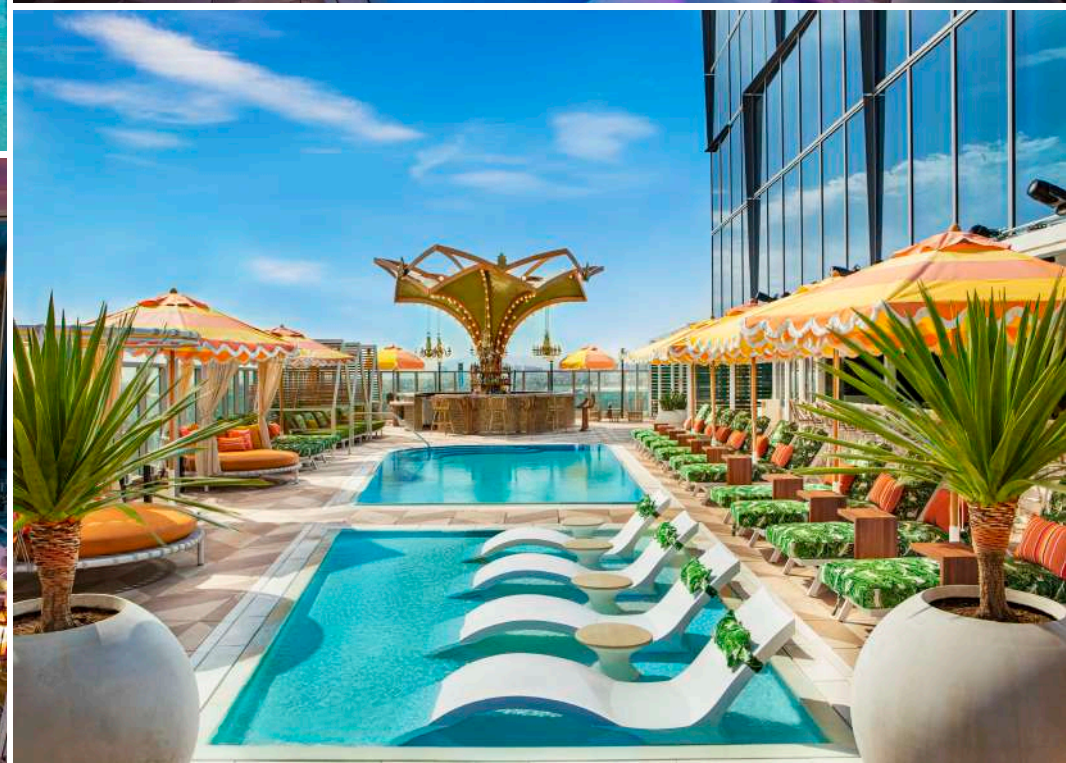
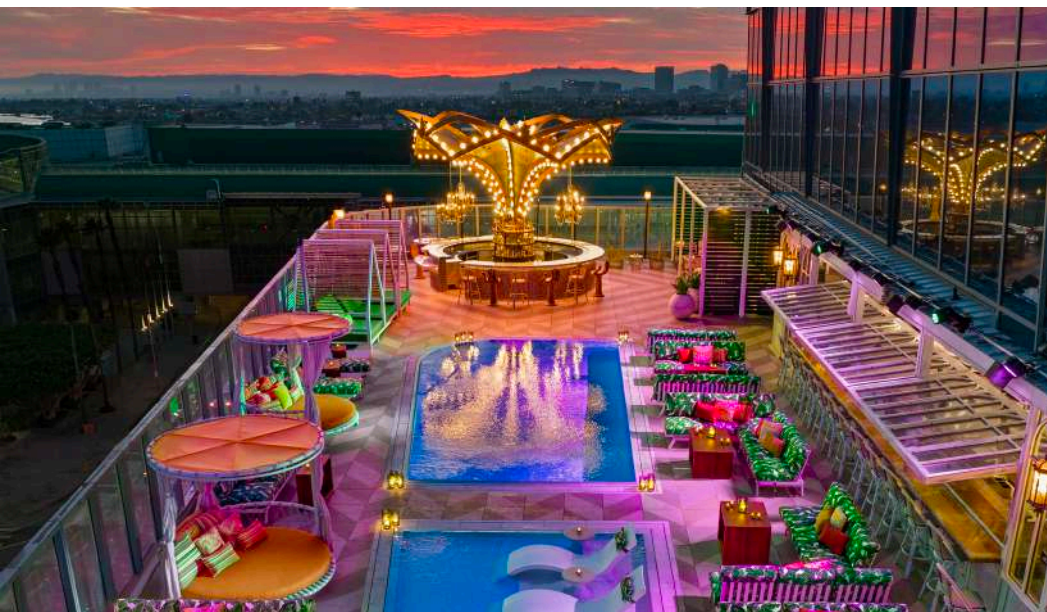
An urban oasis eight stories above Downtown LA, the hotel's Miami-meets-Copacabana pool deck features private cabanas, swing seats, a fire pit, convertible lounge chairs, and Rio-style patterned tiles surrounding two swimming pools. The focal point of the deck is Golden Hour, a striking poolside carousel bar whose rotating top is strung with lights and hanging chandeliers like a Carnival float. From one side of the pool deck, a long bar faces into Qué Bárbaro, the South American grill, through large glass windows that flip open to create an indoor/outdoor dining venue. The large pool is suitable for swimming, while the shallow wading pool serves as a venue for live performances — such as a fire-breathing act or an underwater contortionist. Whether alone or in combination with Qué Bárbaro, the pool deck and Golden Hour are the setting for spectacular parties and events, day or night.

- **Square Footage:** 4,650 total square feet
- **Seated Capacity:** 130
- **Reception Capacity:** 225-300
- **Combined with Qué Bárbaro:** 300

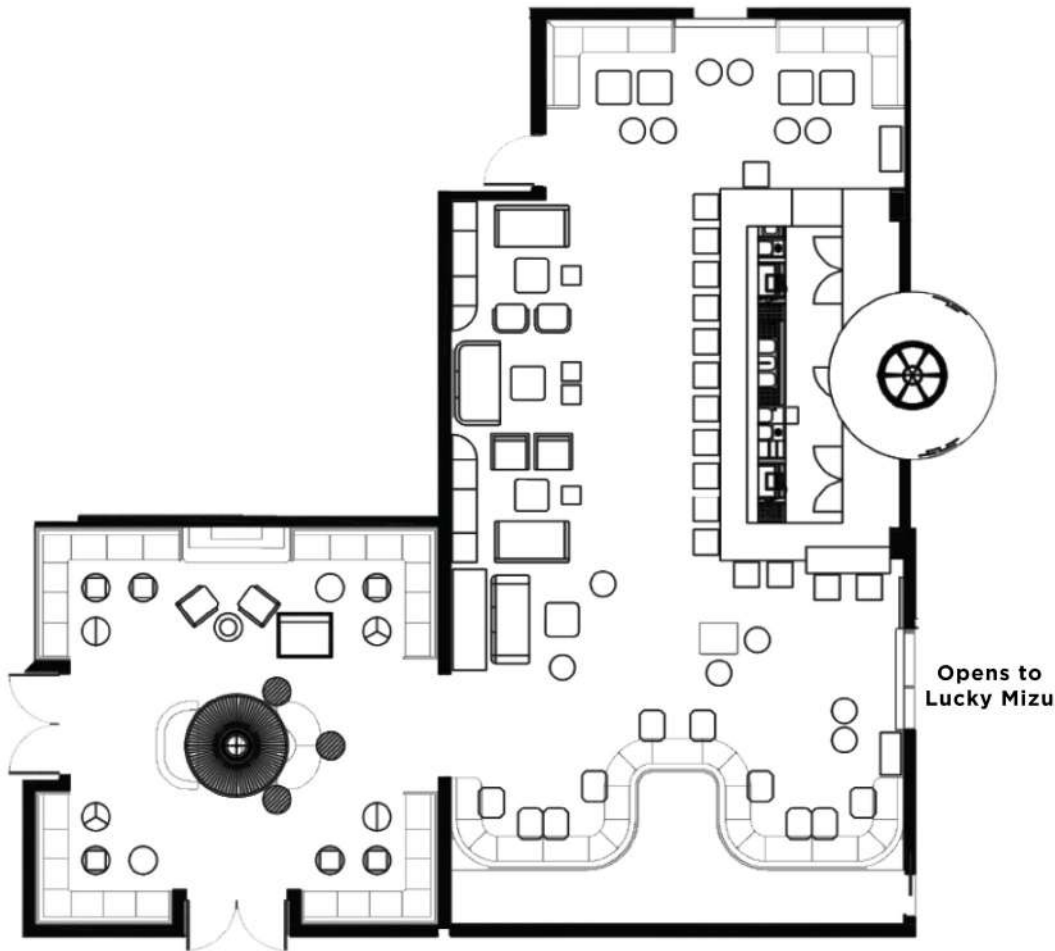
www.goldenhourdtla.com | [@goldenhour.dtla](https://www.instagram.com/goldenhour.dtla)

*CAPACITIES VARY BASED UPON FURNITURE CONFIGURATIONS AND HOURLY EVENT FLOW EXPECTATIONS.

GOLDEN HOUR



Opens to Maison Kasai



MR. WANDERLUST

A sophisticated piano bar and jazz lounge with a theatrical spin, Mr. Wanderlust consists of two rooms: a lounge-like anteroom with a fireplace, high bookshelves, and idiosyncratic mementos and photographs decorating the walls, and a larger bar area with a main stage where performances take place. Serpentine booths upholstered in patterned fabrics encircle the space, and intricate oak detailing on the walls and richly patterned graphic wall coverings express the theme of a well-traveled gentleman. Mr. Wanderlust is an intriguing and entertaining venue for cocktail parties, intimate performances, and unique events.

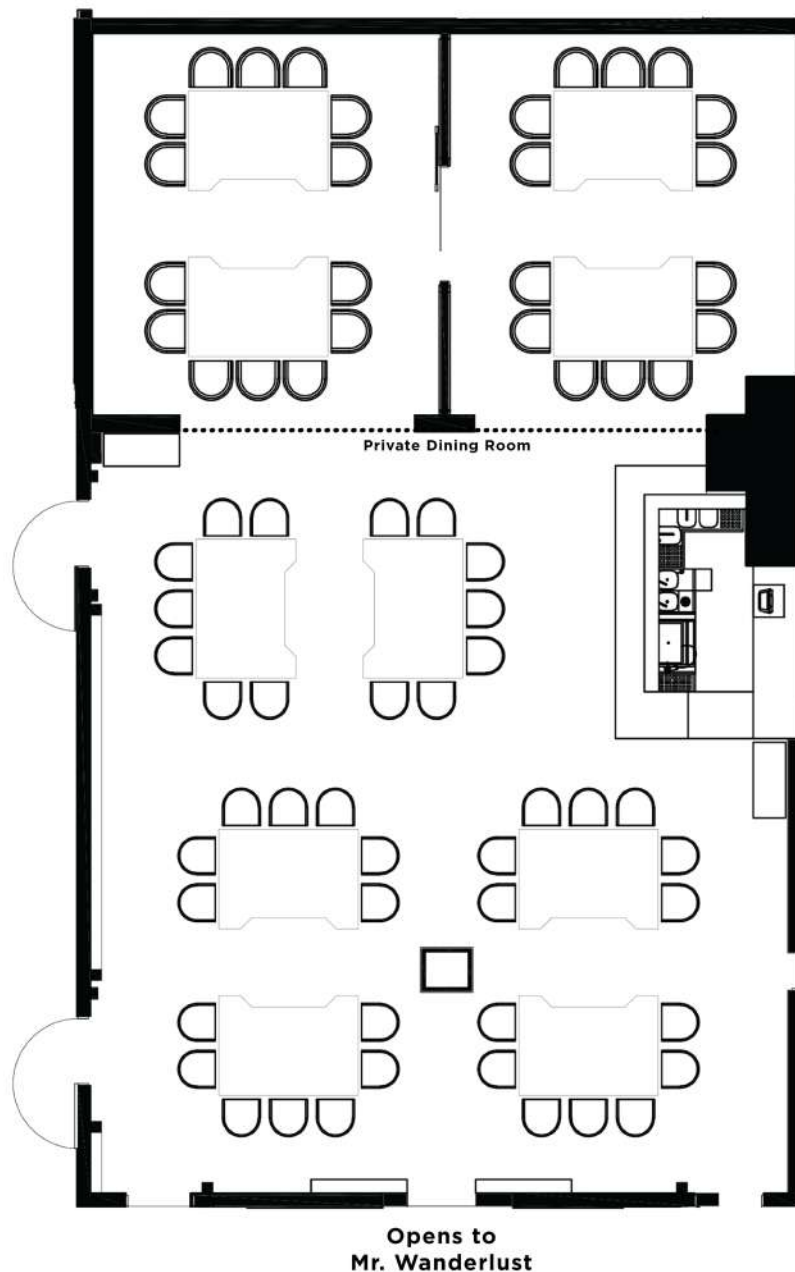
- **Square Footage:** 1,680 total square feet
- **Seated Capacity:** 60
- **Reception Capacity:** 90-150
- **Combined with Maison Kasai:** 230

www.mrwanderlustdtla.com | [@mrwanderlust.dtl](https://www.instagram.com/mrwanderlust.dtl)

*CAPACITIES VARY BASED UPON FURNITURE CONFIGURATIONS AND HOURLY EVENT FLOW EXPECTATIONS.

MR. WANDERLUST





MAISON KASAI

An interactive dining experience from Michelin-starred chef Joshua Gil, Maison Kasai is an elevated teppanyaki restaurant that combines French and Japanese techniques with culinary virtuosity and a touch of performance art. Chefs prepare each course to order on large iron grills, cooking blini to serve with caviar, searing lobster with Normandy butter and vin jaune from France, preparing A5 Wagyu sukiyaki-style, and finishing elegant sauces — as you watch. Created exclusively for Level 8 by Gil, whose Beverly Hills restaurant Mírame has received widespread critical acclaim, Maison Kasai is a gastronomic experience and theatrical event in one. Maison Kasai offers two private dining rooms that can be combined. The restaurant is also available for a full buyout.

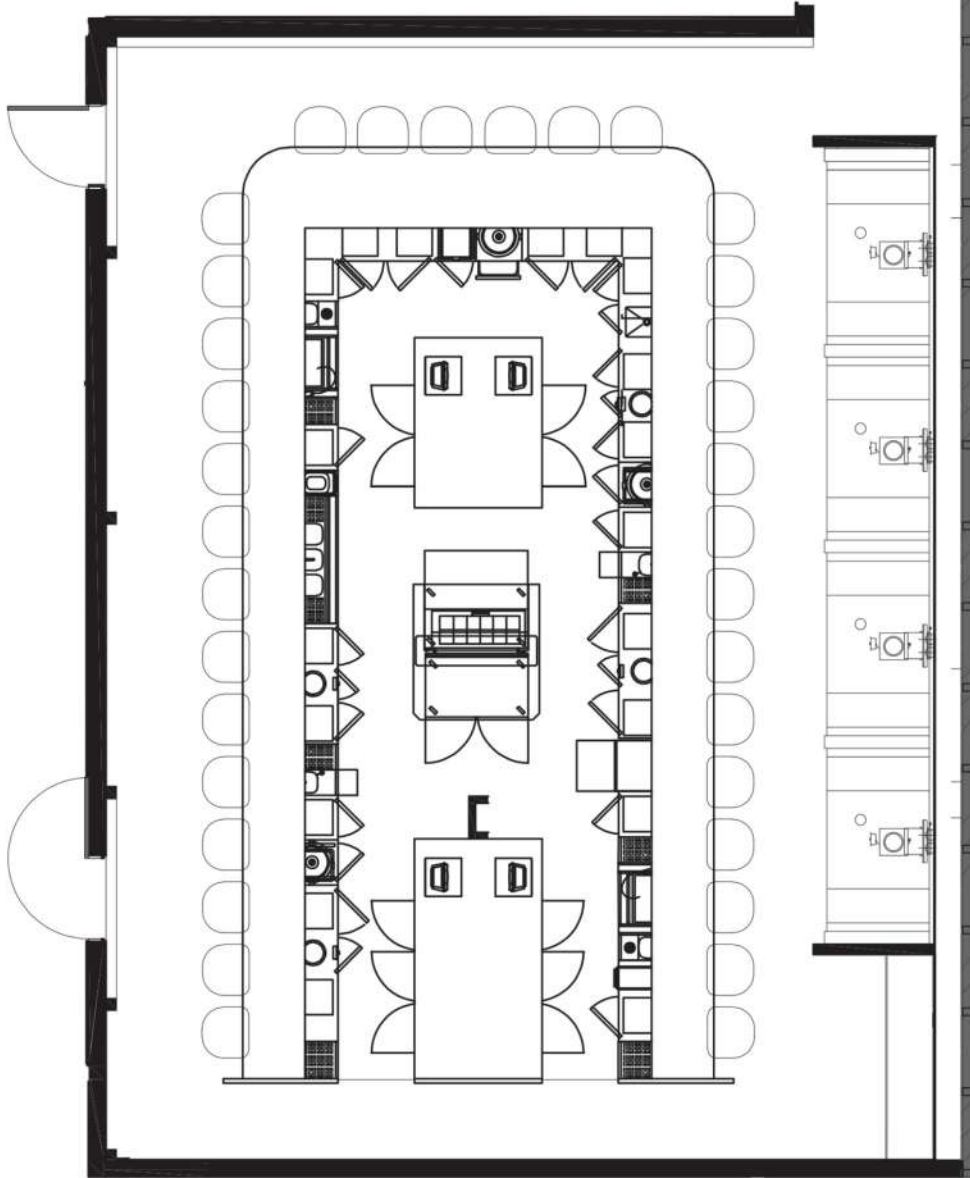
- **Square Footage:** 1,600 total square feet
- **Seated Capacity:** 70
- **Reception Capacity:** 80
- **Private Dining Room Capacity:** 15–30
- **Combined with Mr. Wanderlust:** 230

www.maisonkasaidtla.com | @maisonkasai.dtl

MAISON KASAI



Opens to
Mr. Wanderlust



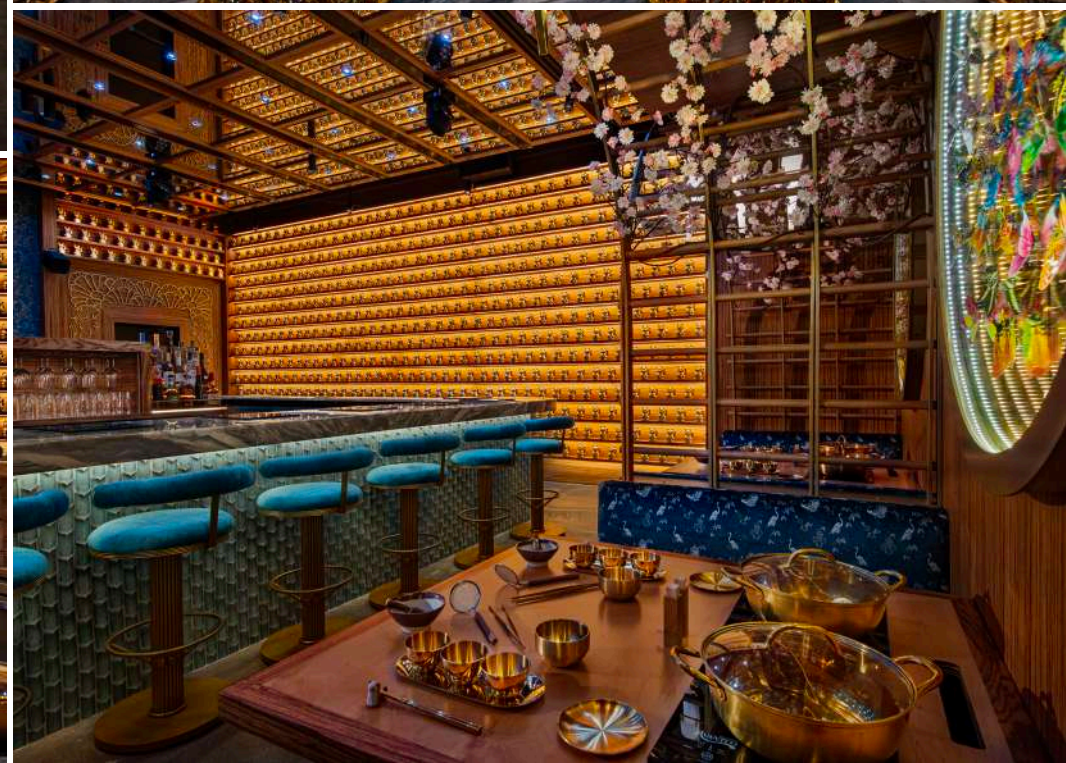
Treat your guests to an event that feels like dining in a music box at Lucky Mizu, a restaurant featuring a global mix of hot pot dishes and seiro mushi steamed entrees. Available for a full buyout, the space is distinguished by a 40-foot Earth Harp that stretches from one corner of the ceiling diagonally across to the other, enveloping the space in sound. Diners prepare their own seiro mushi and hot pot dishes, steaming or boiling the world's finest meats, wild-caught seafood, and fresh organic produce. The menu is overseen by LA chef Hisae Stuck, a native of Kobe, Japan, who worked alongside legendary French chef Joël Robuchon. The ethereal space is lined with cherry blossoms, good luck charms, and butterfly infinity mirrors. When performers play the Earth Harp and drums at the center of the room, the entire restaurant turns into an enormous, immersive musical instrument.

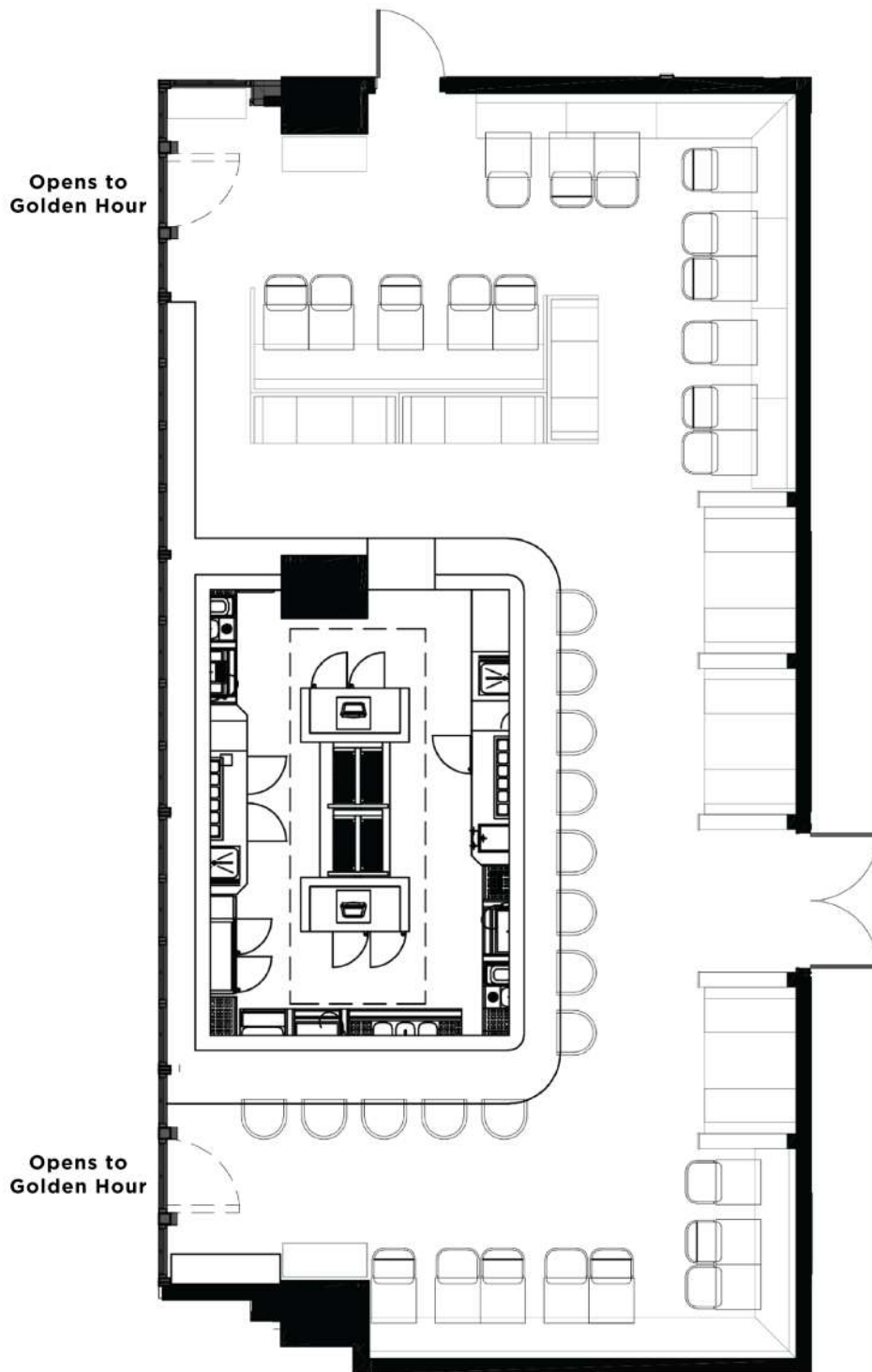
- **Square Footage:** 975 total square feet
- **Seated Capacity:** 40
- **Reception Capacity:** 70
- **Combined with Mr. Wanderlust:** 220

www.luckymizudtla.com | [@luckymizu.dtl](https://www.instagram.com/luckymizu.dtl)

*CAPACITIES VARY BASED UPON FURNITURE CONFIGURATIONS AND HOURLY EVENT FLOW EXPECTATIONS.

LUCKY MIZU





QUÉ BÁRBARO

Discover the diversity of South American cuisine through the tradition of live fire cooking, all prepared with a side of dazzling showmanship. Over an open wood flame, Esquire Chef of the Year Ray Garcia and his team cook a regularly changing menu featuring fine cuts of meats, fresh seafood, and creative vegetarian dishes, all kissed with smoke and infused with bold, refined flavors. Above the grill, which also serves as the bar, rotating risers holding liquor bottles move on command, adding spectacle to an already theatrical space. The restaurant, which comprises a seductive, tropical-hued dining room as well as poolside dining, is available for a full buyout and can be combined with the pool deck and rotating poolside carousel bar Golden Hour for an epic indoor/outdoor event.

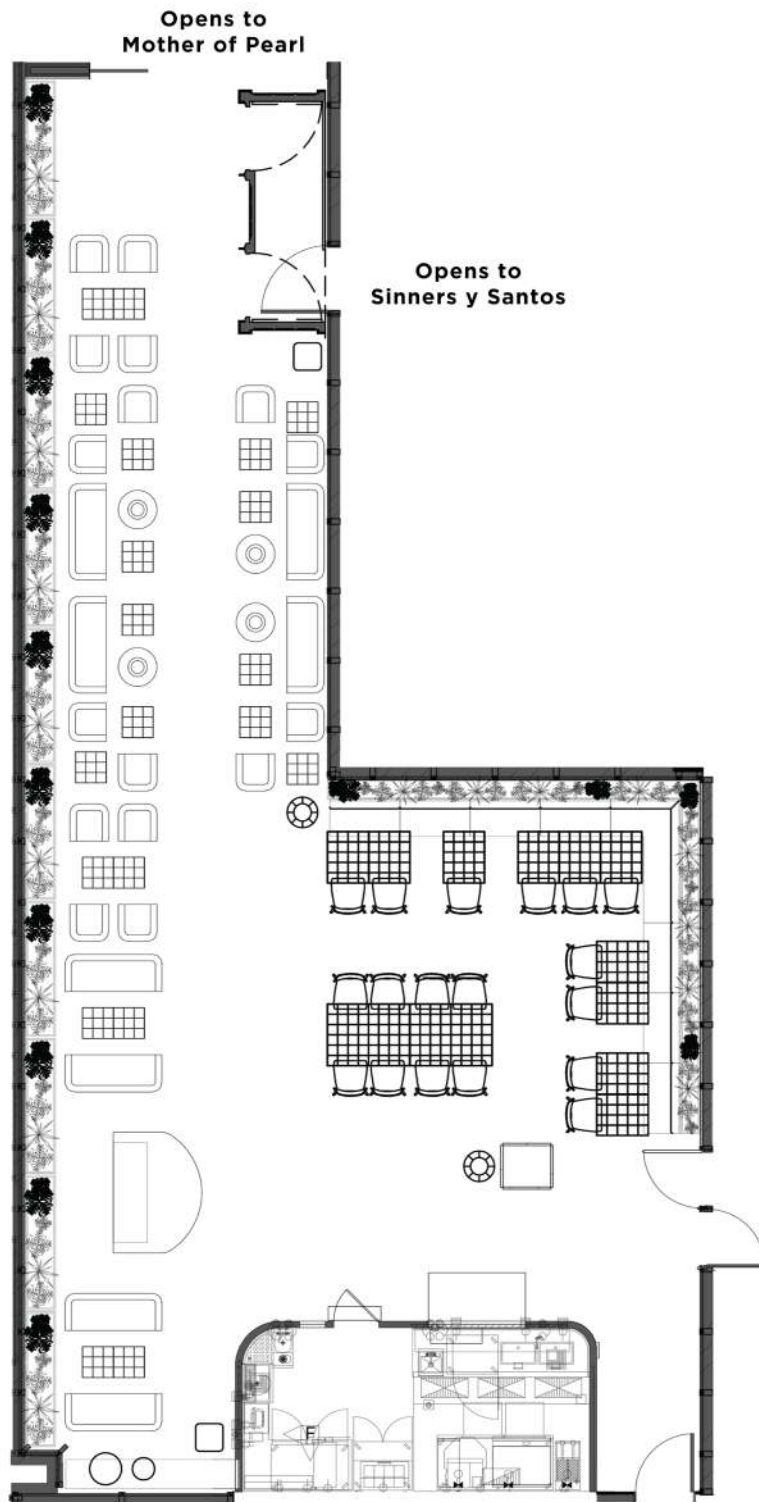
- **Square Footage:** 1,270 total square feet
- **Seated Capacity:** 60
- **Reception Capacity:** 120
- **Combined with Golden Hour:** 420

www.quebarbarodtla.com | [@quebarbaro.dtla](https://www.instagram.com/quebarbaro.dtla)

*CAPACITIES VARY BASED UPON FURNITURE CONFIGURATIONS AND HOURLY EVENT FLOW EXPECTATIONS.

QUÉ BÁRBARO





The Brown Sheep

Host a memorable outdoor event or reception at The Brown Sheep Taqueria, a classic taco truck with a modern twist anchoring a bright, bold, and festive outdoor terrace on the 8th floor. Festooned with Talavera tiles, wood-and-leather Equipale chairs, wrought iron furniture, and other Mexican design elements, the space includes a DJ booth fashioned from the front end of a vintage sports car. Enjoy freshly prepared, “authentically inauthentic” tacos created by chef Ray Garcia — named Esquire Chef of the Year — as well as other Mexican specialties and cocktails, all served from a vintage taco truck. The Brown Sheep Taqueria is available for full buyout alone or in conjunction with Mother of Pearl and/or Sinners y Santos.

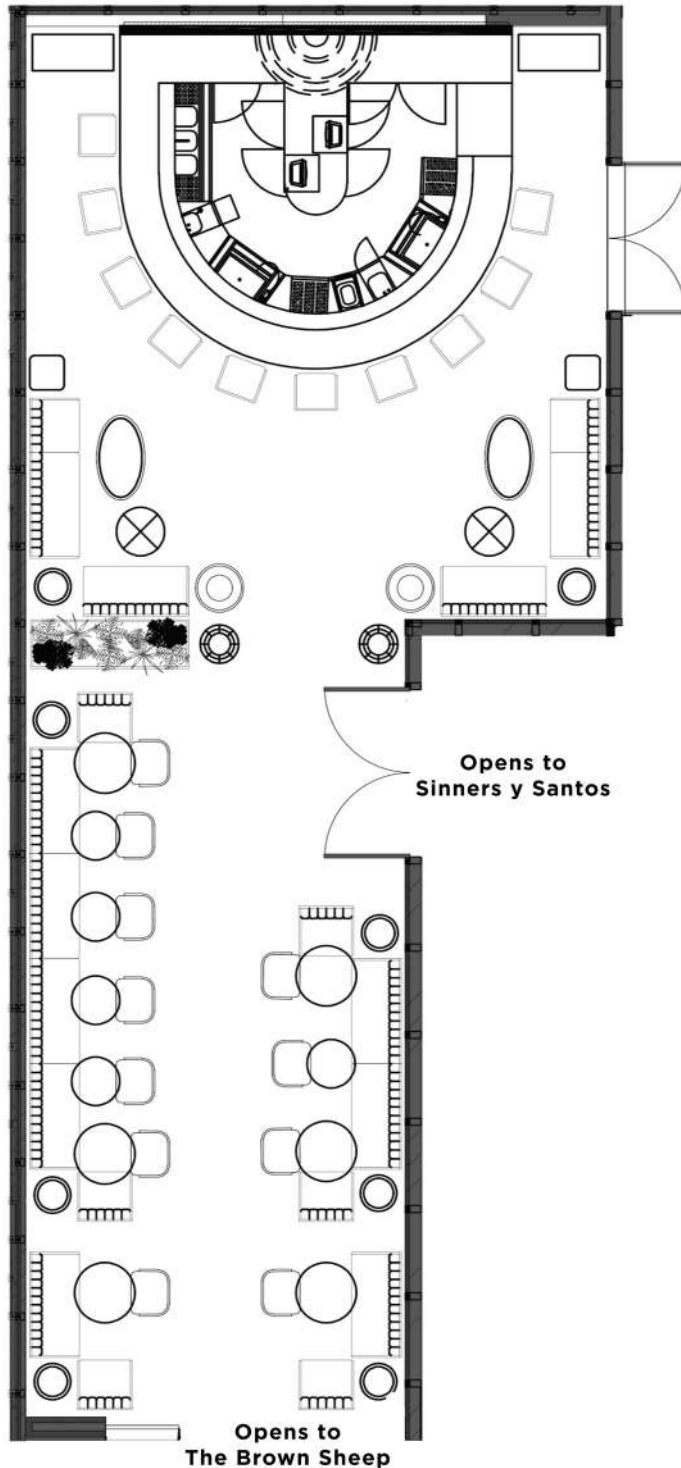
- **Square Footage:** 1,620 total square feet
- **Seated Capacity:** 45
- **Reception Capacity:** 80
- **Full Deck Capacity:** 150

www.brownsheepdtla.com | [@thebrownsheepdtla](https://www.instagram.com/thebrownsheepdtla)

*CAPACITIES VARY BASED UPON FURNITURE CONFIGURATIONS AND HOURLY EVENT FLOW EXPECTATIONS.

THE BROWN SHEEP





Through an archway garlanded in brilliant marigolds, Mother of Pearl is an alfresco Champagne and raw bar on the 8th-floor terrace with a festive atmosphere. Designed as a Spanish Colonial gazebo, the round bar serves up raw bar specialties and creative dishes designed by Michelin-starred chef Joshua Gil and inspired by fruits and vegetables hand-picked from LA's famous farmers markets as well as sustainably sourced seafood. Flexible, flower-bedecked booths allow tables to be grouped together or individually, and cocktail tables topped in marble and intricately filigreed mosaics are nestled around the bar for comfortable lounging. Wrought iron furniture and Talavera tiles lining the bar contribute to the sophisticated garden-like setting. Mother of Pearl is available for full buyout alone or in conjunction with The Brown Sheep Taqueria and/or Sinners y Santos.

- **Square Footage:** 1,000 total square feet
- **Seated Capacity:** 45
- **Reception Capacity:** 70
- **Full Deck Capacity:** 150

www.motherofpearldtla.com | @motherofpearldtla

*CAPACITIES VARY BASED UPON FURNITURE CONFIGURATIONS AND HOURLY EVENT FLOW EXPECTATIONS.

MOTHER OF PEARL



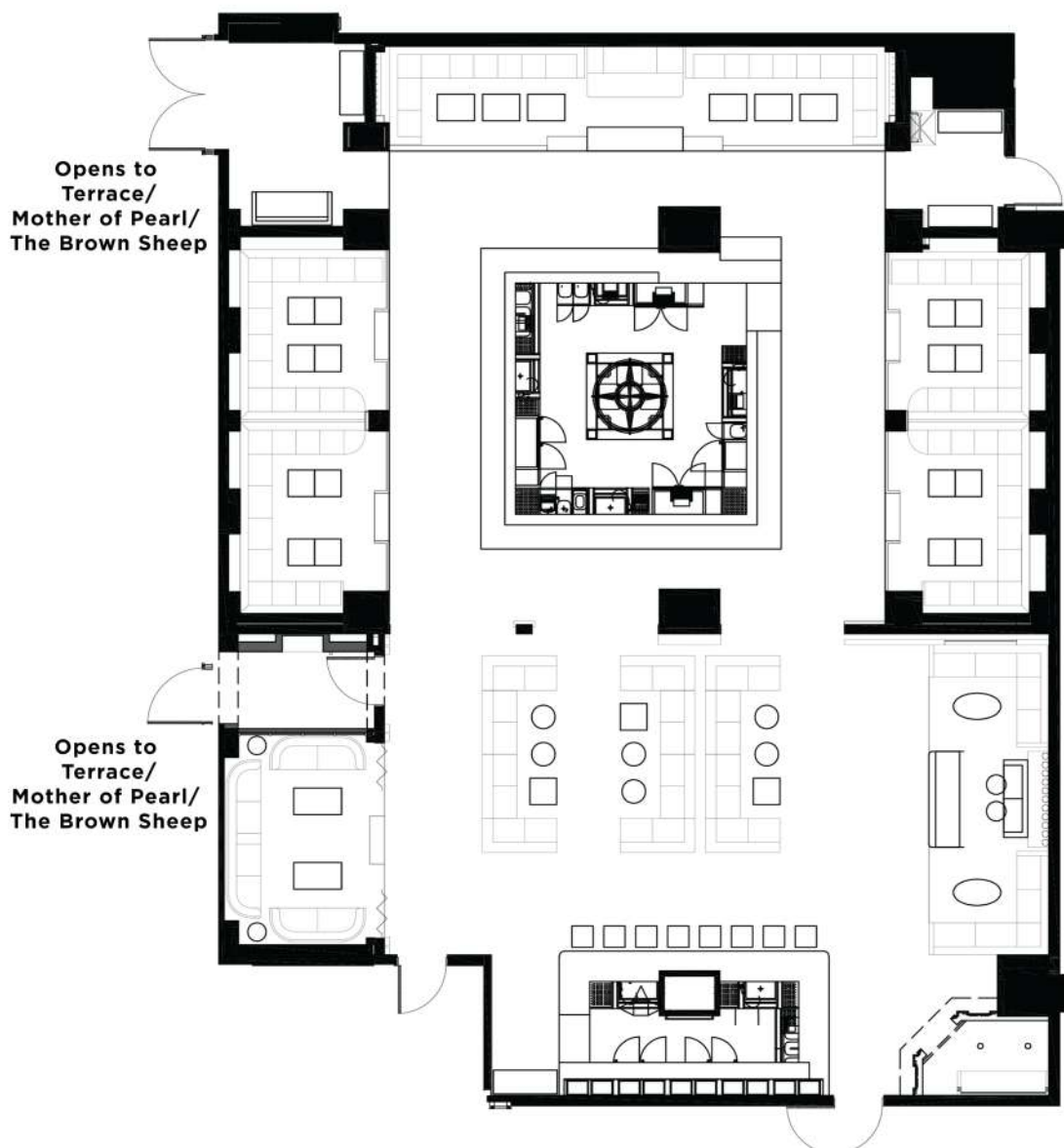
SINNERS · y · SANTOS

An immersive nightlife venue that hosts unforgettable events, Sinners y Santos is conceived as an abandoned 19th-century cathedral that has been converted into a clandestine wrestling theater. The unique space features Gothic stained-glass arches, walls lined in brick and Venetian plaster, wrought iron chandeliers and sconces, and distressed oak millwork. Guests enter through a confessional, where they must admit their sins to gain entry. Once inside, greenery falls from exposed trusses as in an overgrown catacomb, a DJ booth disguised as a pipe organ emits light and smoke, and cozy banquettes sit under arched, barrel-vaulted ceilings. Above the oversize bar in the center of the room, a wrestling ring descends from the ceiling and serves as a stage for surprise performances, such as a choreographed Lucha Libre show by masked acrobats.

- **Square Footage:** 2,810 total square feet
- **Seated Capacity:** 120
- **Reception Capacity:** 300
- **Combined with Full Deck:** 450

www.sinnersyintosdtla.com | [@sinnersyintos](https://www.instagram.com/sinnersyintos)

*CAPACITIES VARY BASED UPON FURNITURE CONFIGURATIONS AND HOURLY EVENT FLOW EXPECTATIONS.



SINNERS Y SANTOS



LEVEL 8

VENUE	SQ. FOOTAGE	SEATED	RECEPTION
GOLDEN HOUR	4,650	130	300
MR. WANDERLUST	1,680	60	150
MAISON KASAI	1,600	70	80
LUCKY MIZU	975	40	70
QUÉ BÁRBARO	1,270	60	120
THE BROWN SHEEP	1,620	45	80
MOTHER OF PEARL	1,000	45	70
SINNERS Y SANTOS	2,810	120	300

*CAPACITIES VARY BASED UPON FURNITURE CONFIGURATIONS AND HOURLY EVENT FLOW EXPECTATIONS.



With a multitude of experiences under one roof, Moxxy and AC Hotel Downtown Los Angeles is DTLA's newest destination for visitors and locals alike. Located in the heart of Downtown, directly across from the Los Angeles Convention Center and Crypto.com Arena, the two hotels, designed by Yabu Pushelberg and Gensler, offer a total of 727 guestrooms, an unprecedented 12 dining and entertainment options, and a dedicated events level featuring 13,000 sq feet of flexible meeting space with capacity for 600 people, including a main events room and two breakout boardrooms with a design inspired by DTLA's industrial heritage.





Soothing, spacious, and bathed in California sunlight through floor-to-ceiling windows, the 347 guest rooms at AC Hotel Downtown Los Angeles are residence-like respites from the energy of the city. With an open-plan design providing a seamless flow, the room's timeless natural materials — oak, birch, stone — and serene palette provide a canvas for creativity. Platform beds are dressed in crisp linens and a rich leather headboard; King rooms also have a pull-out sofa. An integrated bench, closet, and oversize desk along one wall encourages productivity, while a tufted, geometric rug ensures plushness underfoot.

Artwork hanging above the bed provides a splash of color. The creation of Moss & Lam, the series of photo collages, entitled Redux, depicts swimming pools and iconic LA buildings, the images radically edited to present a new, contemporary perspective on the city's mythology. Dividing the living area from the bathroom is a full-height mirror and integrated stone sink/vanity that seems to float over the shelves below. Etched glass, a mosaic-tiled shower, and brushed black metal fixtures add a tailored look.

Double Queen (24)	293 SQ FT
Double Queen City View (87)	306 SQ FT
King (120)	265 SQ FT
King City View (54)	306 SQ FT
Corner King (24)	293 SQ FT
Corner King City View (24)	327 SQ FT
Studio Suite (14)	463 SQ FT



FEATURES

FLOOR-TO-CEILING WINDOWS

HYPOALLERGENIC
PILLOWS; DOWN-FILLED
PILLOWS UPON REQUEST

OVERSIZE DESK WITH
CHARGING OUTLETS

IN-ROOM PHONE
WITH VOICEMAIL

FREE HIGH-SPEED INTERNET

55" LED TV WITH
CABLE, PREMIUM MOVIE
CHANNELS, AND NETFLIX

HAIR DRYER

GARMENT STEAMER

MINI FRIDGE

COFFEE MAKER

KORRES TOILETRIES

LARGE, WALK-IN
RAIN SHOWERS

LIGHTED MAKEUP MIRROR

INDIVIDUAL CLIMATE
CONTROL

MULTIPLE USB PORTS
AND POWER OUTLETS

PERSONAL SAFE,
LAPTOP-COMPATIBLE

PET-FRIENDLY (\$50 PET
FEE PER NIGHT, THE
TOTAL PET FEE WILL NOT
EXCEED \$150 PER STAY)



Inspired by the mystical allure of the California desert, the 380 cozy bedrooms at Moxy Downtown Los Angeles are designed for flexibility and personalization, welcoming modern nomads with a thoughtful balance of utility and panache. SoCal sunshine pours through floor-to-ceiling windows; a copper-colored mosaic and a luminous palette of crimson and cedar reflect the glow of a Mojave sunset. Distressed leather headboards evoke a well-worn motorcycle jacket; cryptic markings on the wall reference the “hobo hieroglyphics” used by history’s vagabonds.

Adaptable, space-saving furniture and storage solutions allow guests to stake their own claim to the space. Clothes and a custom luggage rack hang on the ingenious wall system; a pouf on casters provides movable seating. Desks fold down from the wall, and luggage gets tucked under the bed. Industrial-chic bathrooms, lined in iridescent copper tile, feature a rain shower and an elongated sink carved from lava stone. Hanging on one wall is a sculpture by artist Regan Appleton that consists of chrome motorcycle handlebars mounted on a taxidermy-style plaque — a clever amalgamation of the twin desert themes of bikers and wildlife.

Double Queen (48)	241 SQ FT
Double Queen City View (64)	257 SQ FT
King (172)	197 SQ FT
Corner King (48)	248 SQ FT
Corner King City View (24)	241 SQ FT
Corner Double Queen City View (24)	247 SQ FT



FEATURES

FLOOR-TO-CEILING WINDOWS

HYPOALLERGENIC
PILLOWS; DOWN-FILLED
PILLOWS UPON REQUEST

IN-ROOM DESK

55" FLAT-SCREEN SMART
HDTV LOADED WITH
BLUETOOTH SPEAKERS, FULL
CABLE ACCESS, AND FREE
STREAMING APPS (NETFLIX,
HULU, HBO MAX, AND MORE)

PEGBOARD WALL ALLOWS
FOR ADDITIONAL STORAGE
AND HOLDS A FLEXIBLE
FOLD-AWAY LUGGAGE RACK

INDIVIDUAL CLIMATE
CONTROL

MULTIPLE USB PORTS
AND POWER OUTLETS

PERSONAL SAFE,
LAPTOP-COMPATIBLE

CLOTHING STEAMER

HAIR DRYER

RETRO PHONE

PET-FRIENDLY (\$50 PET
FEE PER NIGHT, THE
TOTAL PET FEE WILL NOT
EXCEED \$150 PER STAY)

RECORD PLAYER AND
VINYL LPS AVAILABLE
UPON REQUEST

LARGE, WALK-IN
RAIN SHOWERS

LAVA STONE VANITIES

MURMUR BATHROOM AMENITIES

LEVEL 8

CONTACT US
EVENTS@LEVEL8DTLA.COM
WWW.LEVEL8DTLA.COM

SINNERS · SANTOS

QUÉ BÁRBARO

The Brown Sheep

MAISON KASAI



GOLDEN HOUR

MR. WANDERLUST

