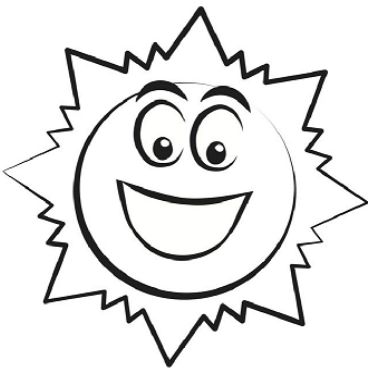


KID'S MENU

hello
Spring!



FAVORITES

PANCAKES

Two Pancakes, A Pasture Raised Scrambled Egg + Two Slices Of Smoked Bacon Or A Sausage Link. 7.5

FRENCH TOAST

Two Slices Of French Toast, One Pasture Raised Scrambled Egg Two Slices Of Smoked Bacon Or A Sausage Link. 7.5

BELGIAN WAFFLE

One Large Belgian Waffle, One Pasture Raised Scrambled Egg + Two Slices Of Smoked Bacon Or A Sausage Link. 7.5

CLASSIC COMBO

One Pasture Raised Scrambled Egg, Two Slices Of Smoked Bacon Or A Sausage Link + Hash Browns Or Cubed Potatoes. 7.5

BEVERAGES

MILK OR CHOCOLATE MILK. 2

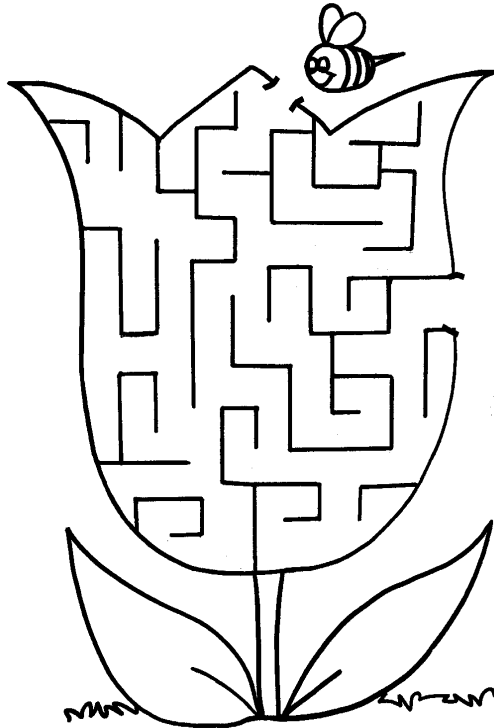
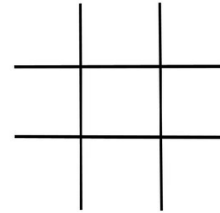
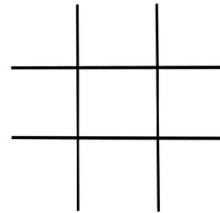
HOT CHOCOLATE. 2

LEMONADE. 2

BARQ'S ROOT BEER, COKE, DIET COKE, DR. PEPPER, FANTA ORANGE OR SPRITE. 2

(FREE REFILLS)

JUICE: APPLE, CRANBERRY, GRAPEFRUIT, ORANGE OR PINEAPPLE. 2



C H I C K E J U N E G R W O W
H P U D D L E M A P R I L H S
I B L O H B U N N Y E B O M E
B A S E B A L L T T E U M A E
S U M A M A T C H A N T F R D
H O T S P R I C I N G T L C S
N E S T T A P I H E A F O H O
E G S G E T R A I N B O W L R
E G S S Y R E W S O L Y E E A
A S E H B U F N N S O L R S I
E G R O W O F L L Y O Y S S N
A N U W E F M A Y Y M V R O C
S A N E R A N B O W S H E S O
U M B R E L L A E A S T E R A
T H A S P R I N G P U D D E T



| APRIL | FLOWERS | PASSOVER |
|-----------|---------|----------|
| BASEBALL | GREEN | PUDDLE |
| BLOOM | GROW | RAINBOW |
| BUNNY | HATCH | RAINCOAT |
| BUTTERFLY | JUNE | SEEDS |
| CHICK | MARCH | SHOWERS |
| EASTER | MAY | SPRING |
| EGGS | NEST | UMBRELLA |



HYIUHEE HEE