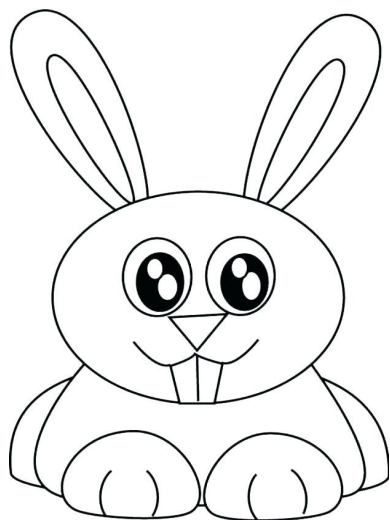
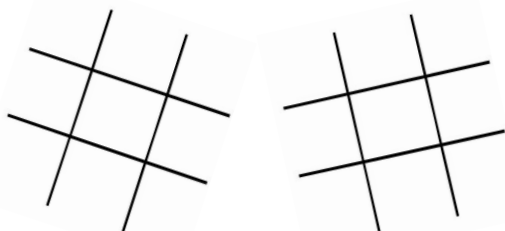
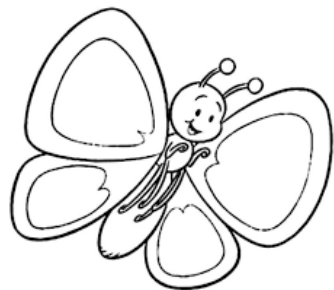
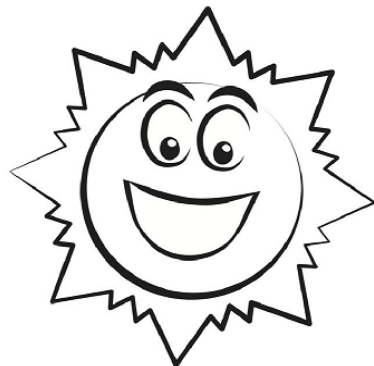


hello Spring!



C H I C K E J U N E G R W O W
 H P U D D L E M A P R I L H S
 I B L O H B U N N Y E B O M E
 B A S E B A L L T T E U M A E
 S U M A M A T C H A N T F R D
 H O T S P R I C I N G T L C S
 N E S T T A P I H E A F O H O
 E G S G E T R A I N B O W L R
 E G S S Y R E W S O L Y E E A
 A S E H B U F N N S O L R S I
 E G R O W O F L L Y O Y S S N
 A N U W E F M A Y Y M V R O C
 S A N E R A N B O W S H E S O
 U M B R E L L A E A S T E R A
 T H A S P R I N G P U D D E T



APRIL	FLOWERS	PASSOVER
BASEBALL	GREEN	PUDDLE
BLOOM	GROW	RAINBOW
BUNNY	HATCH	RAINCOAT
BUTTERFLY	JUNE	SEEDS
CHICK	MARCH	SHOWERS
EASTER EGGS	MAY	SPRING
	NEST	UMBRELLA



KID'S MENU

FAVORITES

PANCAKES

Two Pancakes, One Pasture Raised Scrambled Egg + Two Slices Of Smoked Bacon Or A Sausage Link. 9.5

FRENCH TOAST

Two Slices Of French Toast, One Pasture Raised Scrambled Egg + Two Slices Of Smoked Bacon Or A Sausage Link. 9.5

WAFFLE

One Belgian Waffle, One Pasture Raised Scrambled Egg + Two Slices Of Smoked Bacon Or A Sausage Link. 9.5

CLASSIC COMBO

One Pasture Raised Scrambled Egg, Two Slices Of Smoked Bacon Or A Sausage Link + Hash Browns Or Cubed Potatoes. 9.5

BEVERAGES

MILK OR CHOCOLATE MILK. 2.75

HOT CHOCOLATE. 2.75

LEMONADE. 2.75

COKE, DIET COKE OR SPRITE. 2.75

HENRY WEINHARD'S ROOT BEER. 3.5

