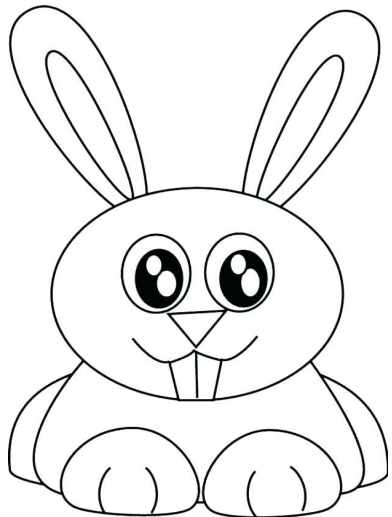
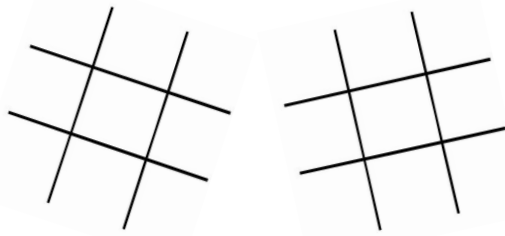
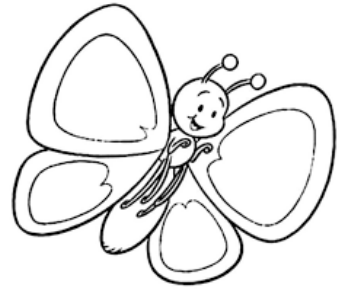
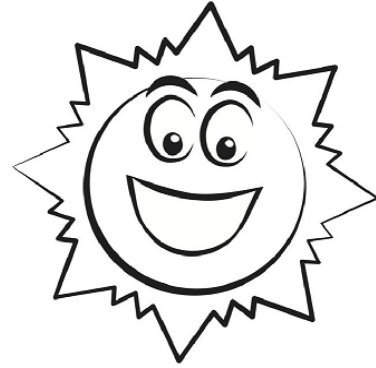


hello
Spring!



C H I C K E J U N E G R W O W
 H P U D D L E M A P R I L H S
 I B L O H B U N N Y E B O M E
 B A S E B A L L T T E U M A E
 S U M A M A T C H A N T F R D
 H O T S P R I C I N G T L C S
 N E S T T A P I H E A F O H O
 E G S G E T R A I N B O W L R
 E G S S Y R E W S O L Y E E A
 A S E H B U F N N S O L R S I
 E G R O W O F L L Y O Y S S N
 A N U W E F M A Y Y M V R O C
 S A N E R A N B O W S H E S O
 U M B R E L L A E A S T E R A
 T H A S P R I N G P U D D E T

APRIL	FLOWERS	PASSOVER
BASEBALL	GREEN	PUDDLE
BLOOM	GROW	RAINBOW
BUNNY	HATCH	RAINCOAT
BUTTERFLY	JUNE	SEEDS
CHICK	MARCH	SHOWERS
EASTER	MAY	SPRING
EGGS	NEST	UMBRELLA

KID'S MENU

FAVORITES

PANCAKES

Two Pancakes, One Pasture Raised Scrambled Egg + Two Slices Of Smoked Bacon Or A Sausage Link. 9.5

FRENCH TOAST

Two Slices Of French Toast, One Pasture Raised Scrambled Egg + Two Slices Of Smoked Bacon Or A Sausage Link. 9.5

MINI WAFFLES

Two Mini Belgian Waffles, One Pasture Raised Scrambled Egg + Two Slices Of Smoked Bacon Or A Sausage Link. 9.5

CLASSIC COMBO

One Pasture Raised Scrambled Egg, Two Slices Of Smoked Bacon Or A Sausage Link + Hash Browns Or Cubed Potatoes. 9.5

BEVERAGES

MILK OR CHOCOLATE MILK. 2.75

HOT CHOCOLATE. 2.75

STRAWBERRY OR

RASPBERRY LEMONADE. 2.75

COKE, DIET COKE, DR. PEPPER, SPRITE OR FANTA ORANGE. 2.75

