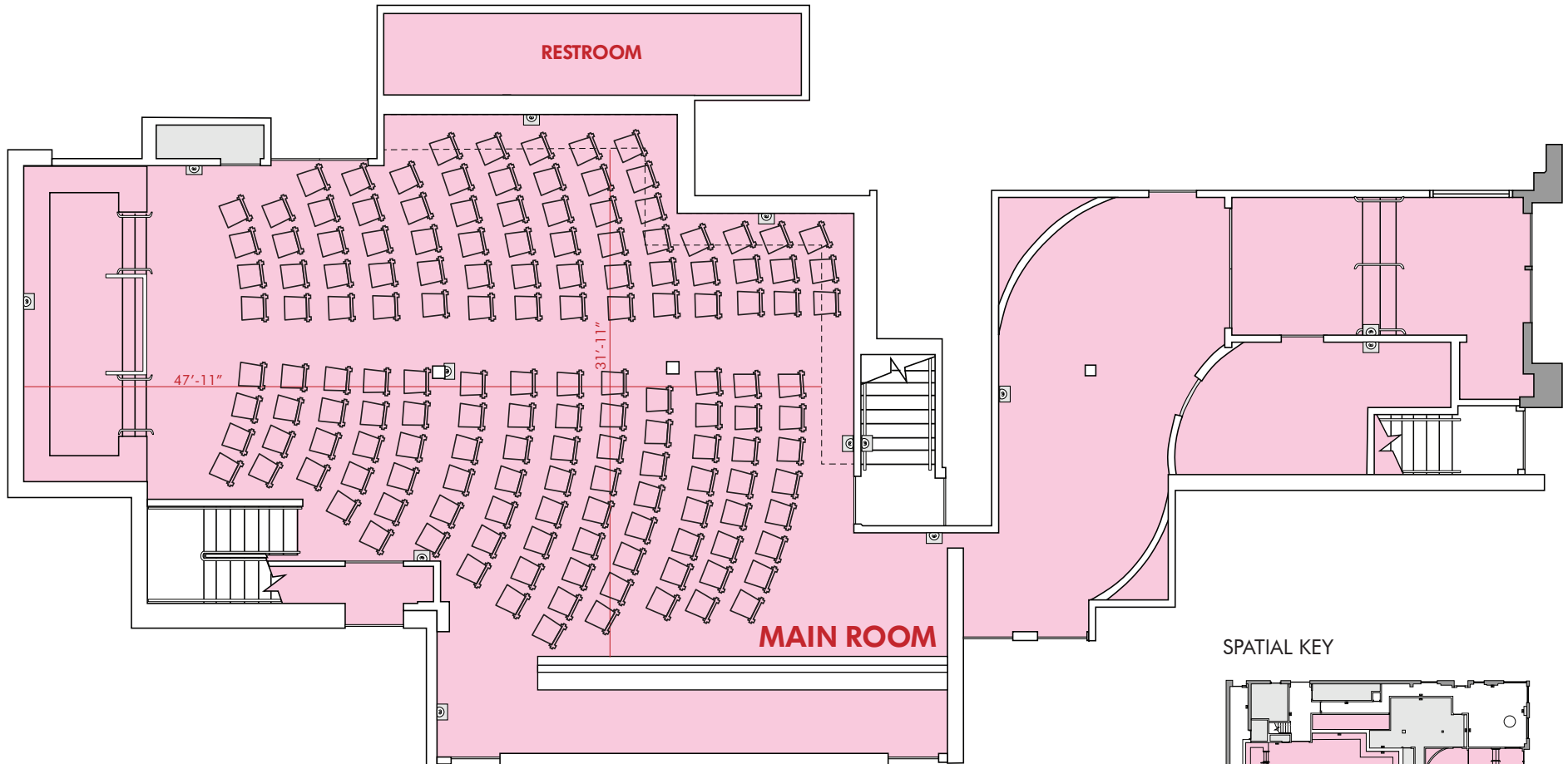


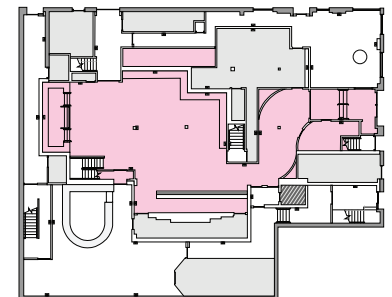


MAIN ROOM | CEREMONY SEATING

CAPACITY: 150 Chevron Style



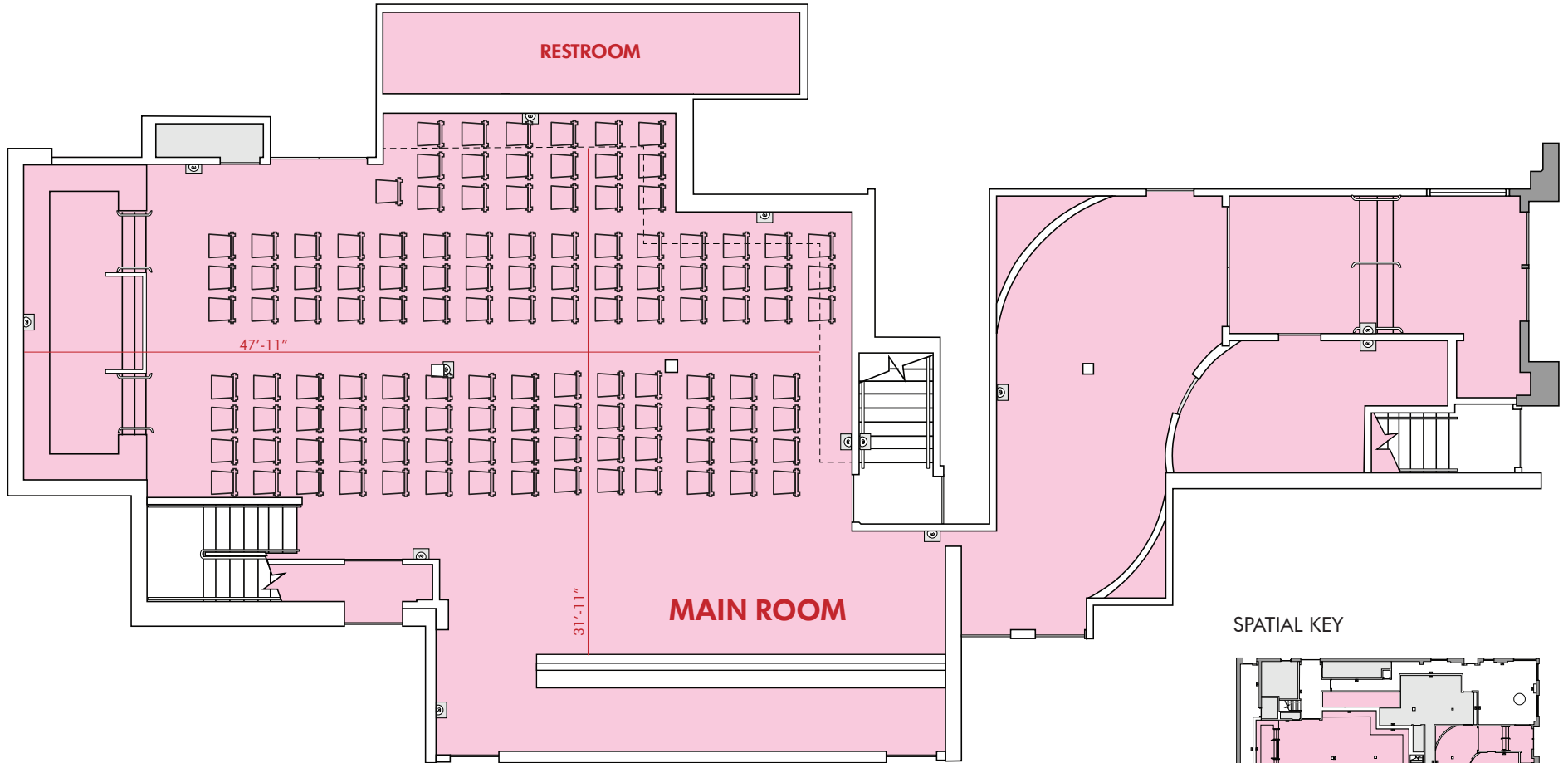
SPATIAL KEY



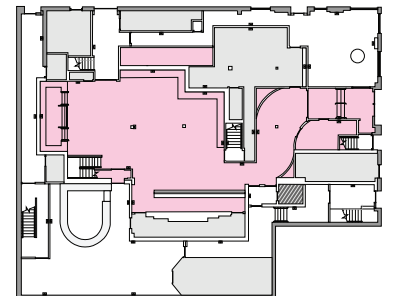


MAIN ROOM | CEREMONY SEATING

CAPACITY: 120 Theatre-Style Seating



SPATIAL KEY

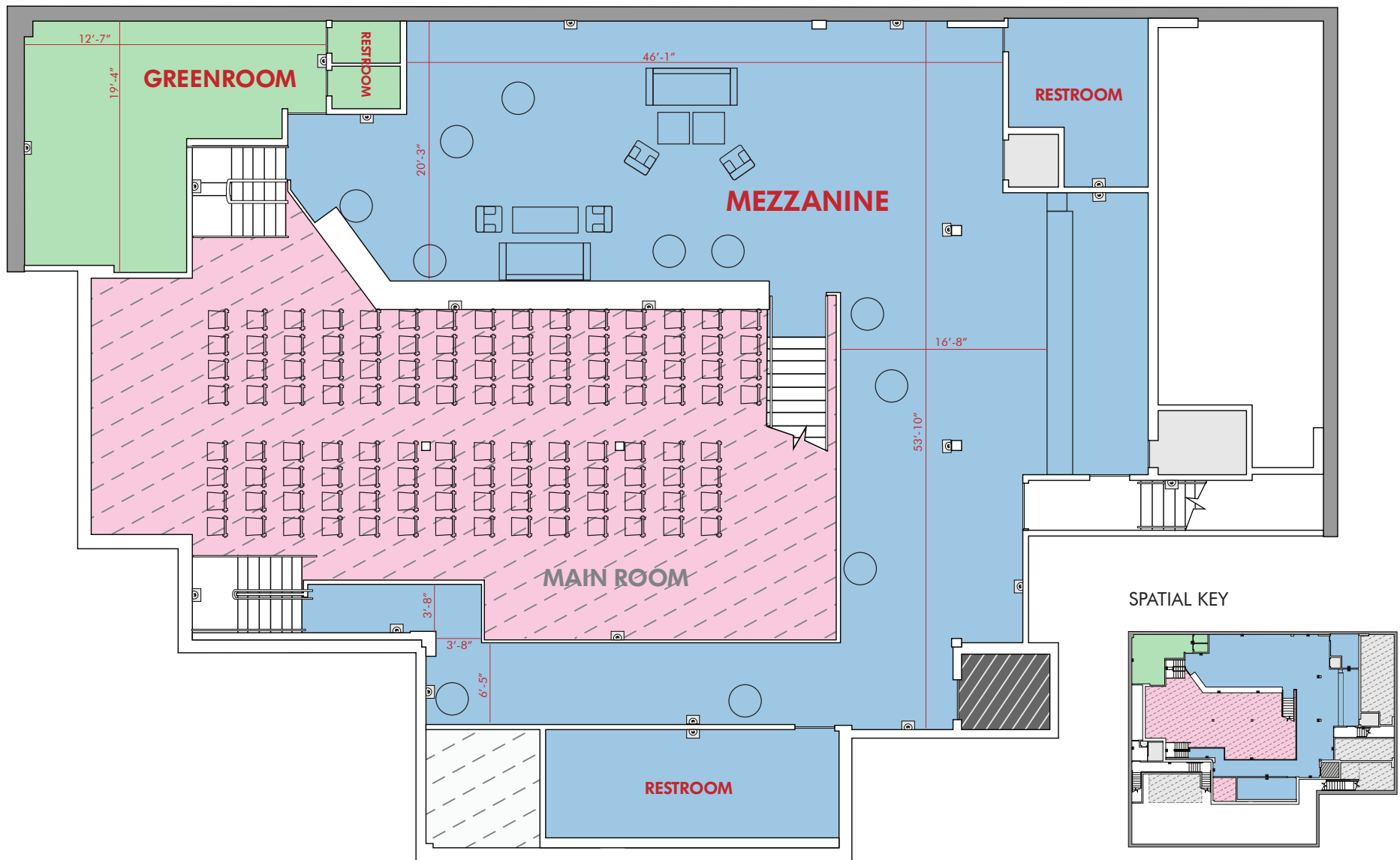




WYTHE

MAIN ROOM & MEZZANINE | COCKTAIL RECEPTION WITH CEREMONY SEATING

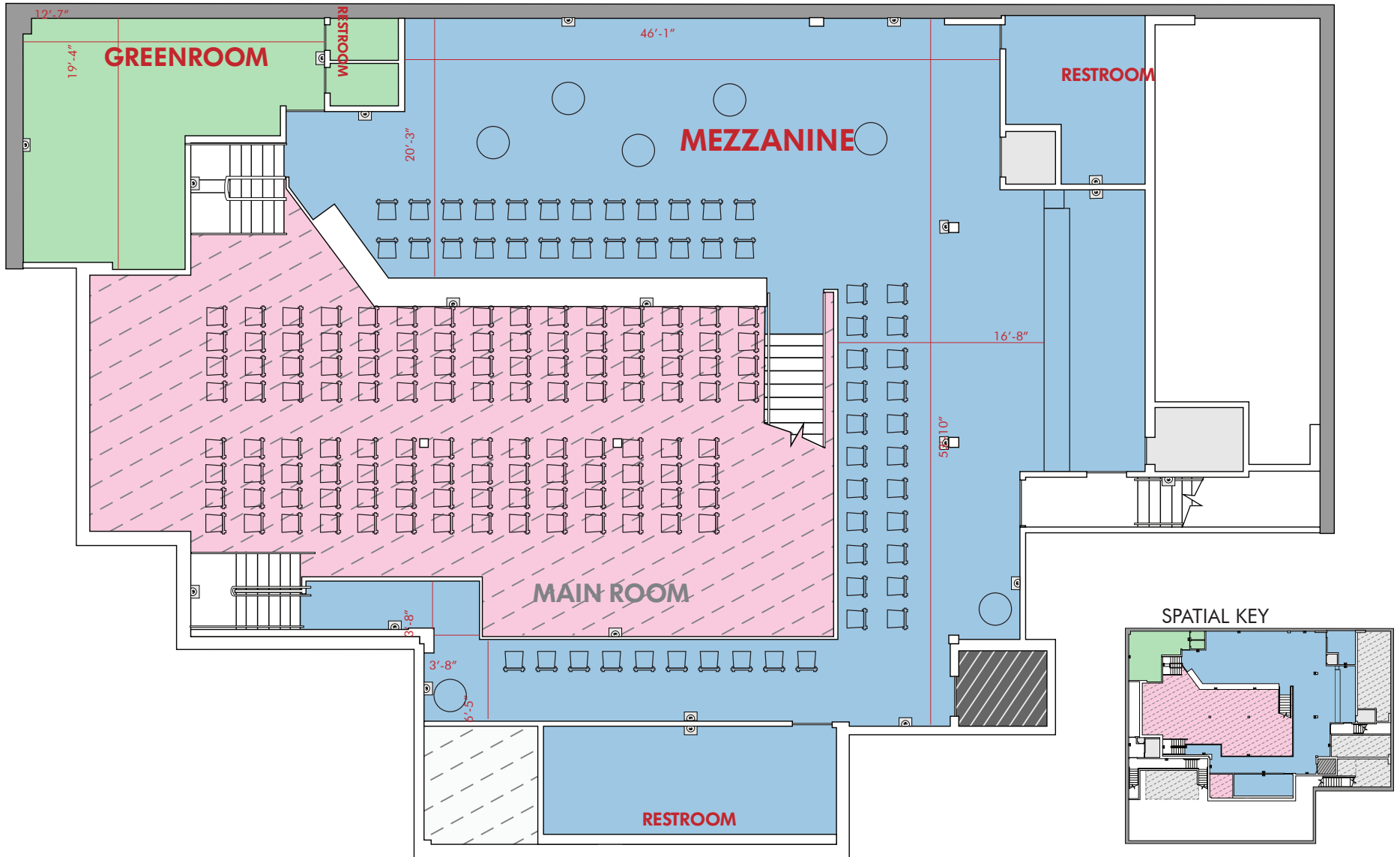
CAPACITY: 100 Standing on Mezzanine & 120 Theatre-Style in Main Room





MAIN ROOM & MEZZANINE | CEREMONY SEATING

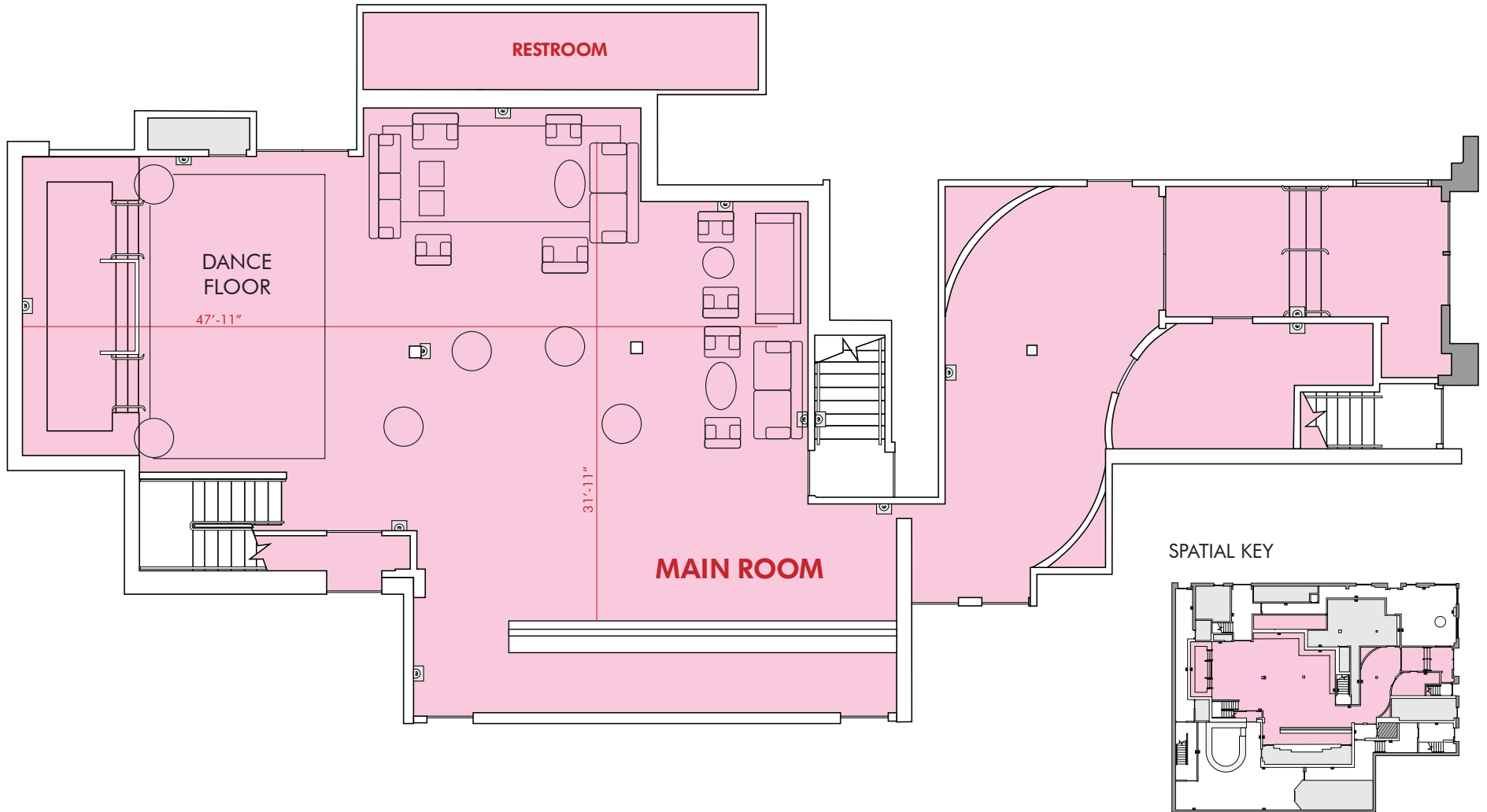
CAPACITY: 120 Theatre-Style in Main Room & 55 Theatre-Style on Mezzanine





MAIN ROOM | COCKTAIL RECEPTION

CAPACITY: 250 Standing

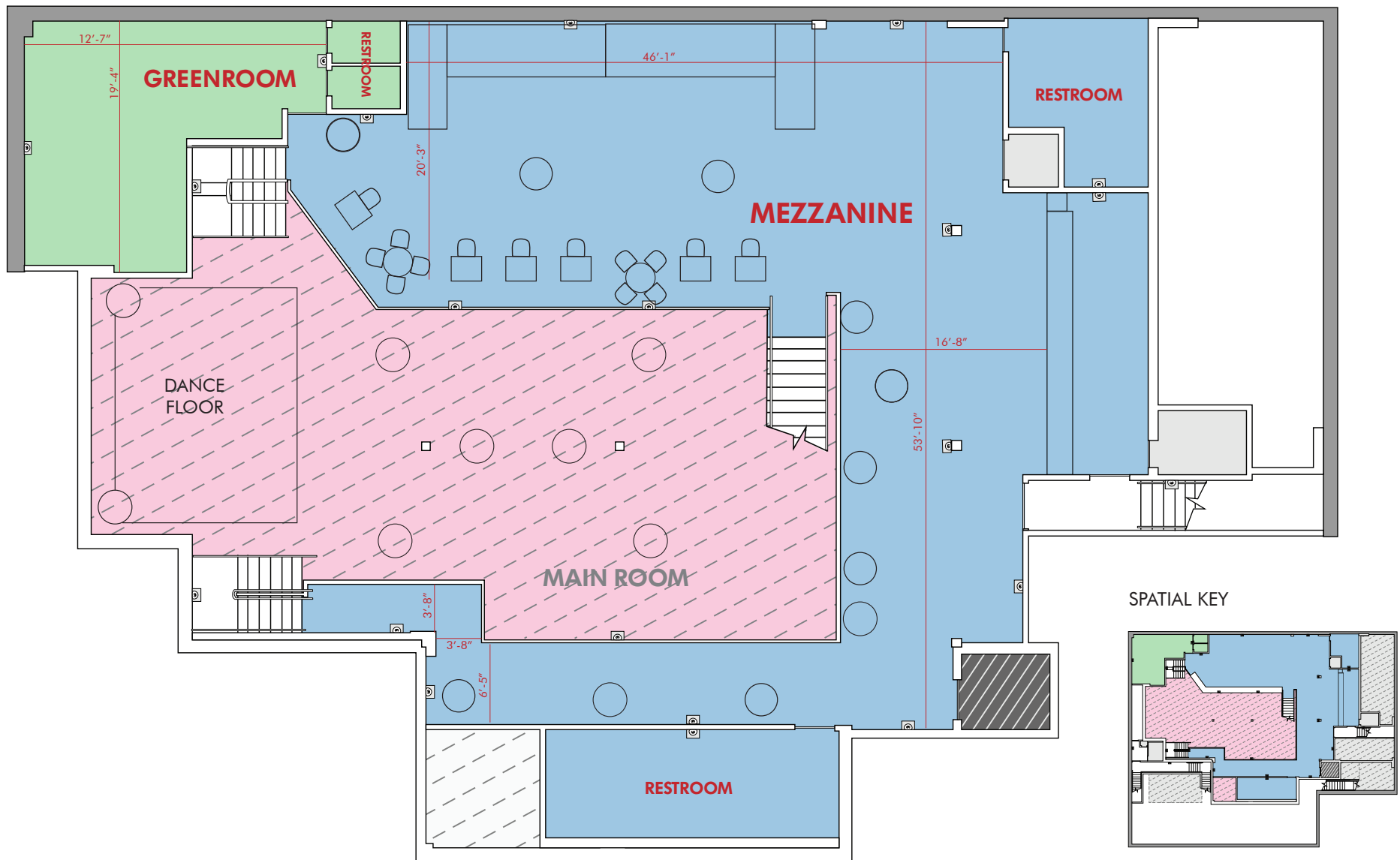




WYTHE

MAIN ROOM & MEZZANINE | COCKTAIL RECEPTION WITH DANCE FLOOR

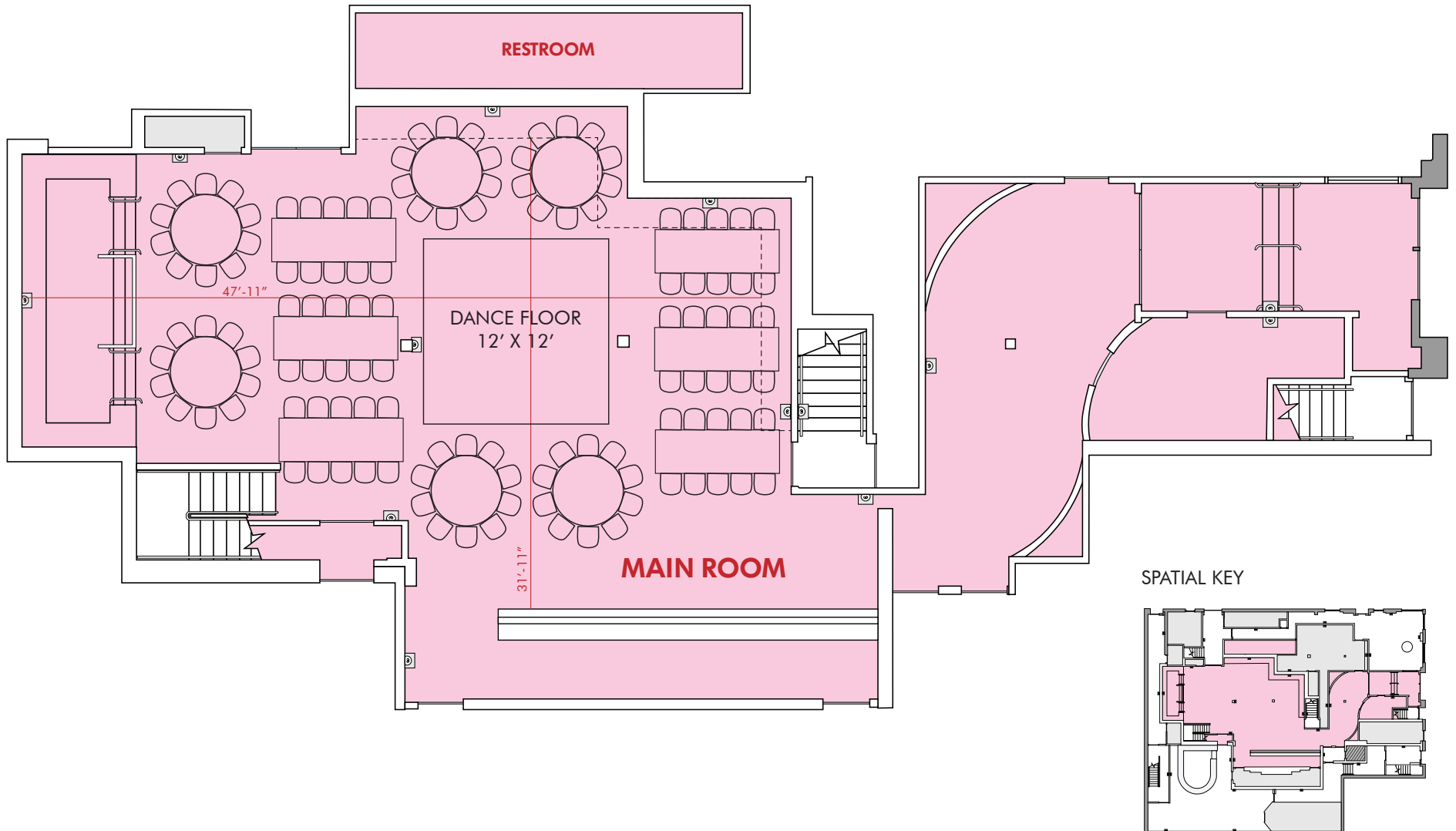
CAPACITY: 100 Standing on Mezzanine & 250 Standing in Main Room





MAIN ROOM | SEATED RECEPTION WITH DANCE FLOOR

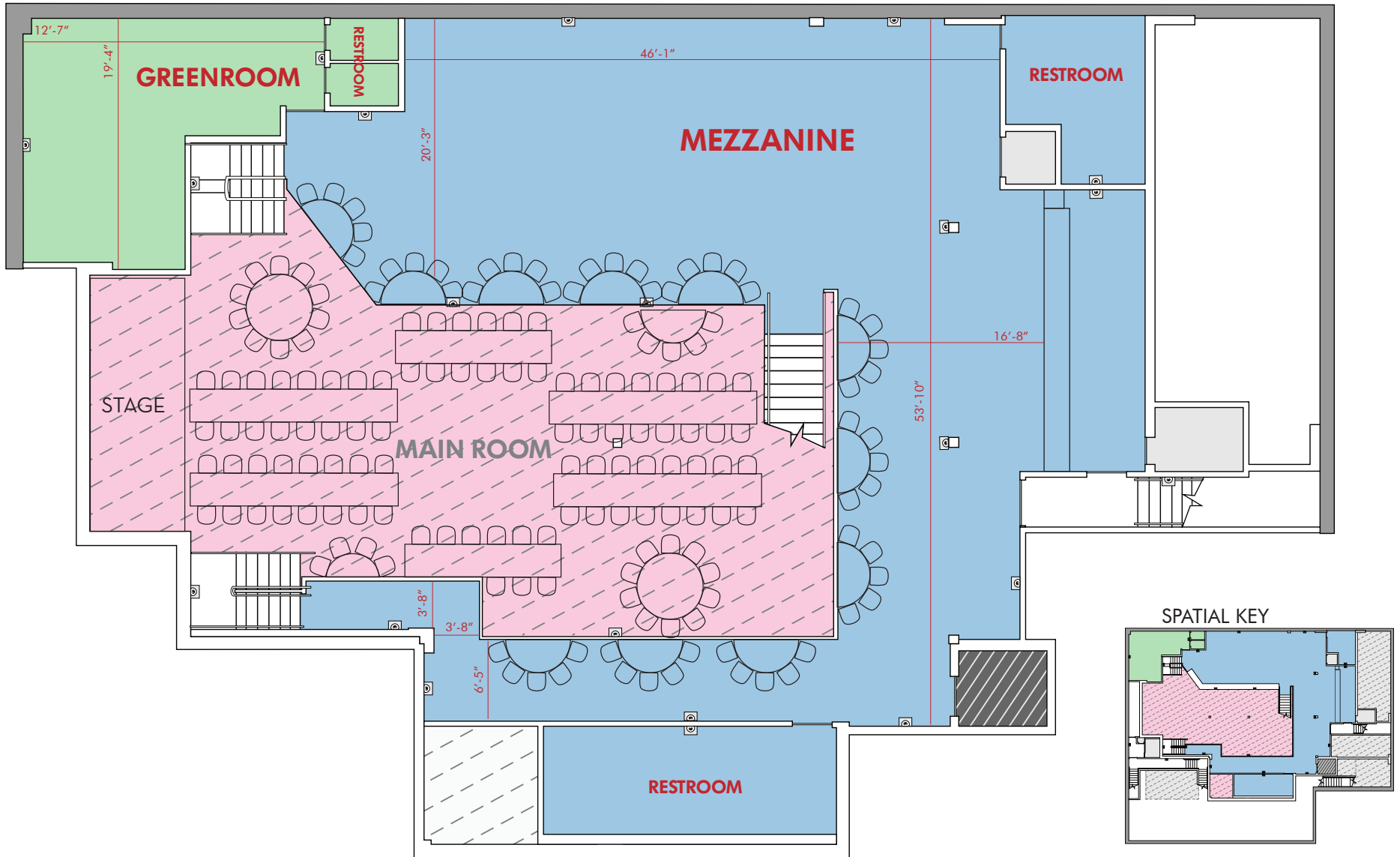
CAPACITY: 120 Seated





MAIN ROOM & MEZZANINE | SEATED RECEPTION

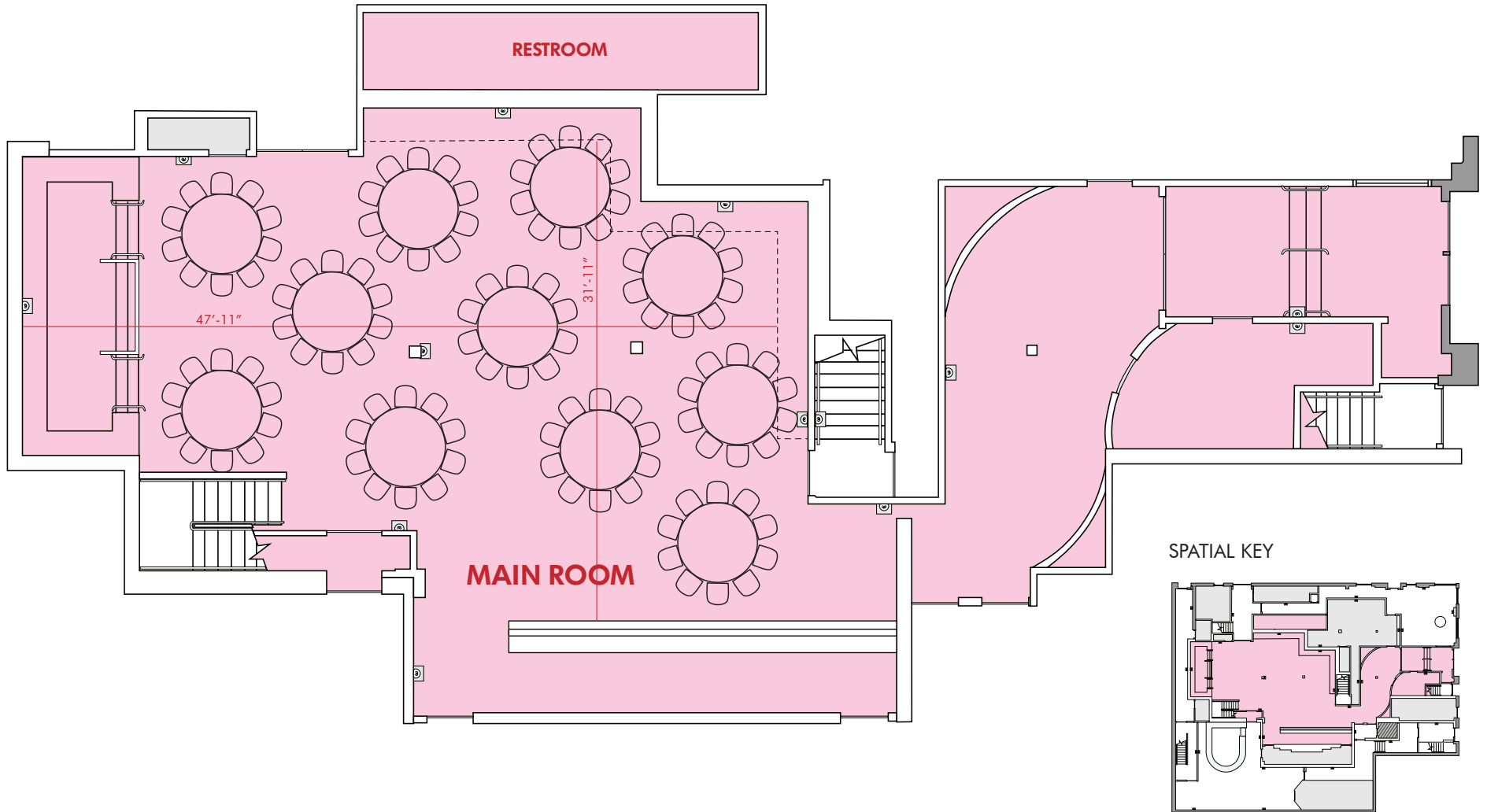
CAPACITY: 120 Seated in Main Room & 55 Seated on Mezzanine (175 total)





MAIN ROOM | SEATED RECEPTION

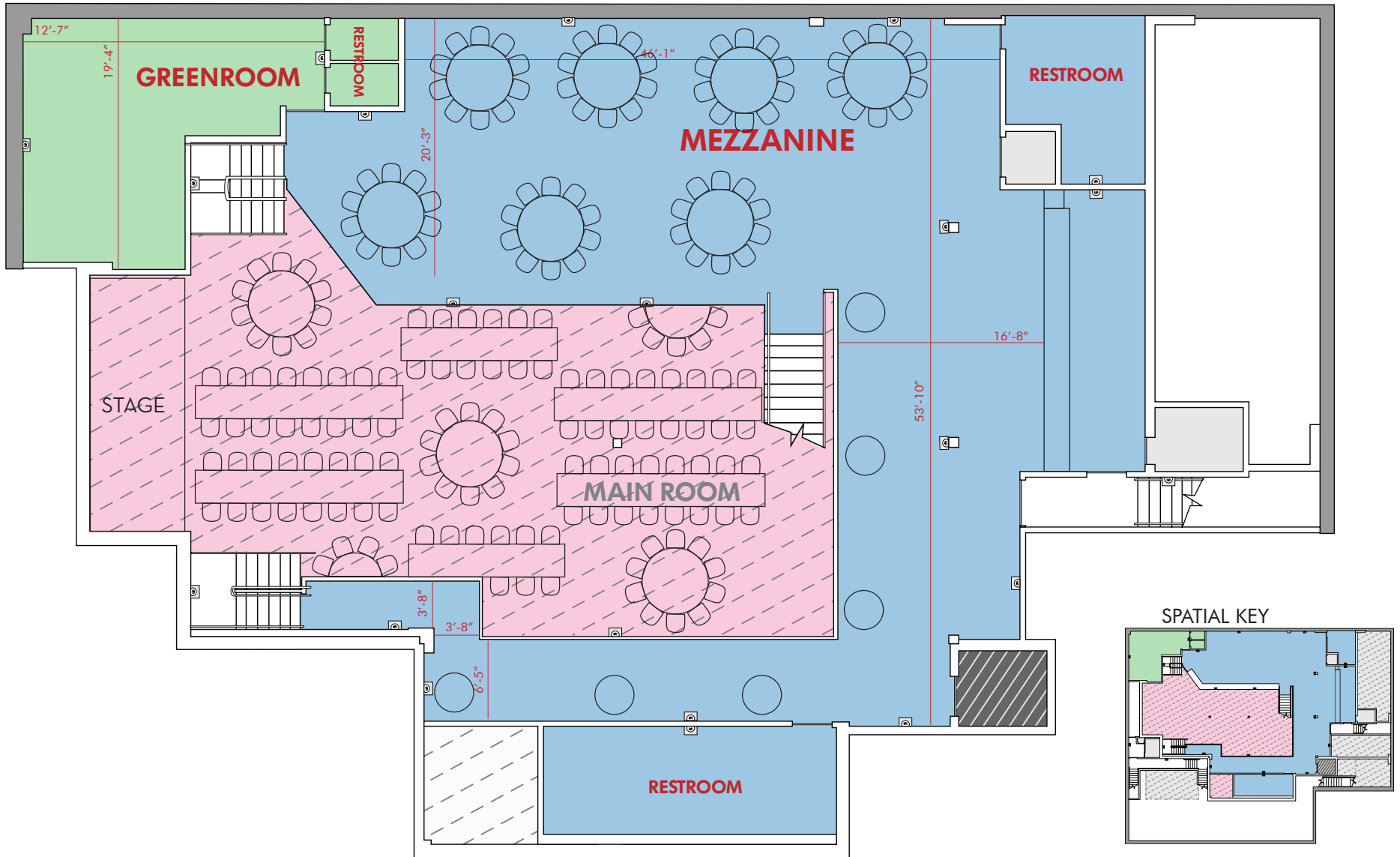
CAPACITY: 110 Seated





MAIN ROOM & MEZZANINE | SEATED RECEPTION

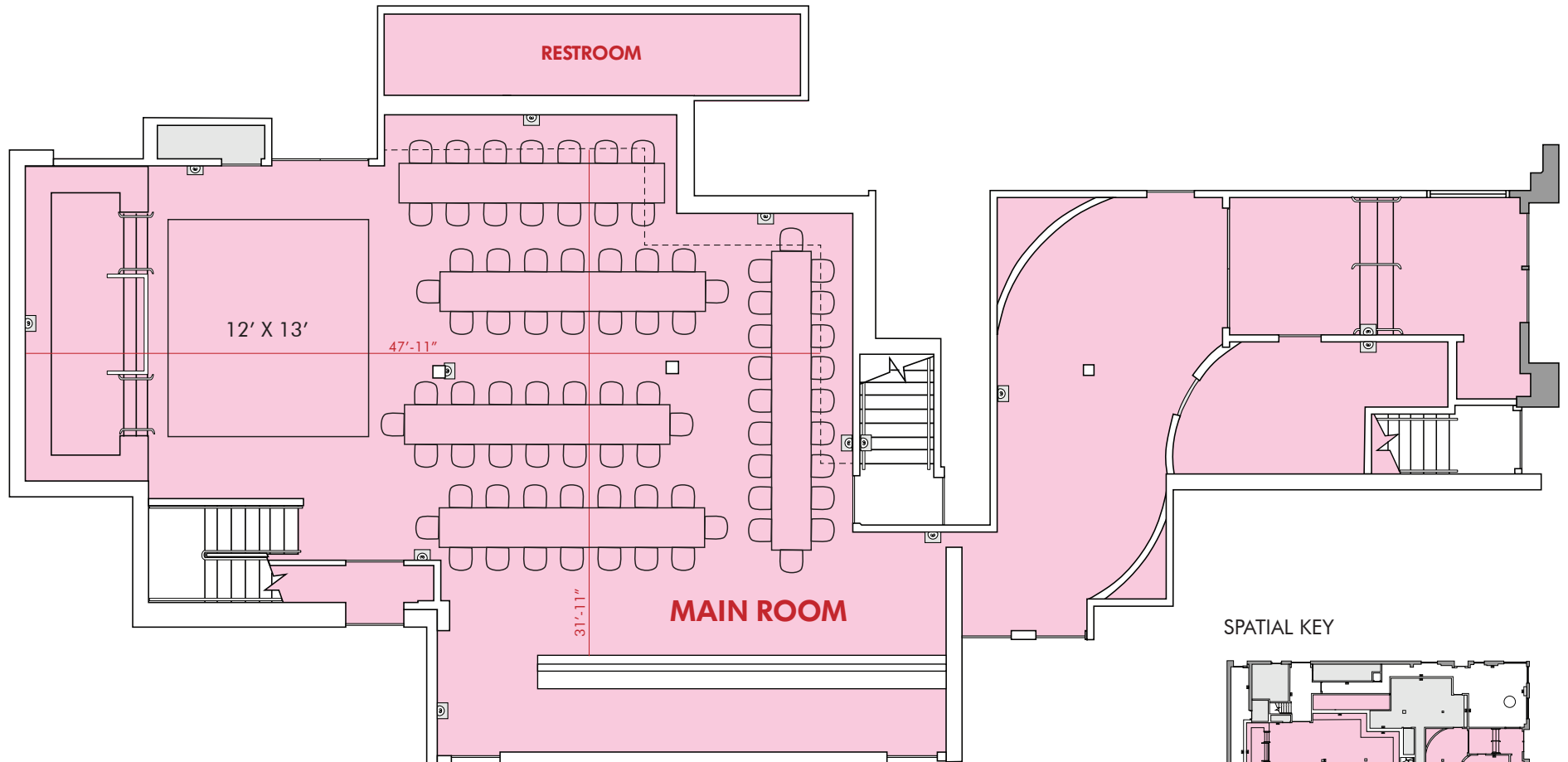
CAPACITY: 130 Seated in Main Room & 70 Seated on Mezzanine (200 total)



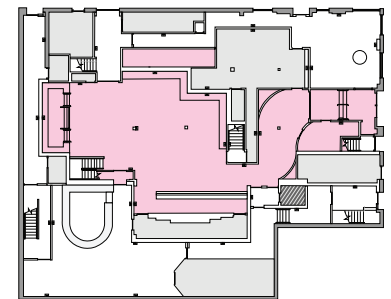


MAIN ROOM | SEATED DINNER WITH STAGE

CAPACITY: 82 Seated



SPATIAL KEY





MAIN ROOM & MEZZANINE | SEATED RECEPTION

CAPACITY: 90 Seated in Main Room & 60 Seated on Mezzanine (150 total)

